

This is a guide to make your own theme, I will be adding to it over a period of time 😊

Note :- In many of the locations for textcolor : color you will see a font property, click on the font name to change the font and text size etc.

For the top (Command Module)

- 1-Explorer & Shell > Explorer > CommandModule > <1> - edit the image here
- 2-Explorer & Shell > Explorer > CommandModule > <3> > <1> - Textcolor : Color
- 2-Explorer & Shell > Explorer > CommandModule > <4> > <1> -Textcolor : Color
- 2-Explorer & Shell > Explorer > CommandModule > < 5> > <1> - Textcolor : Color

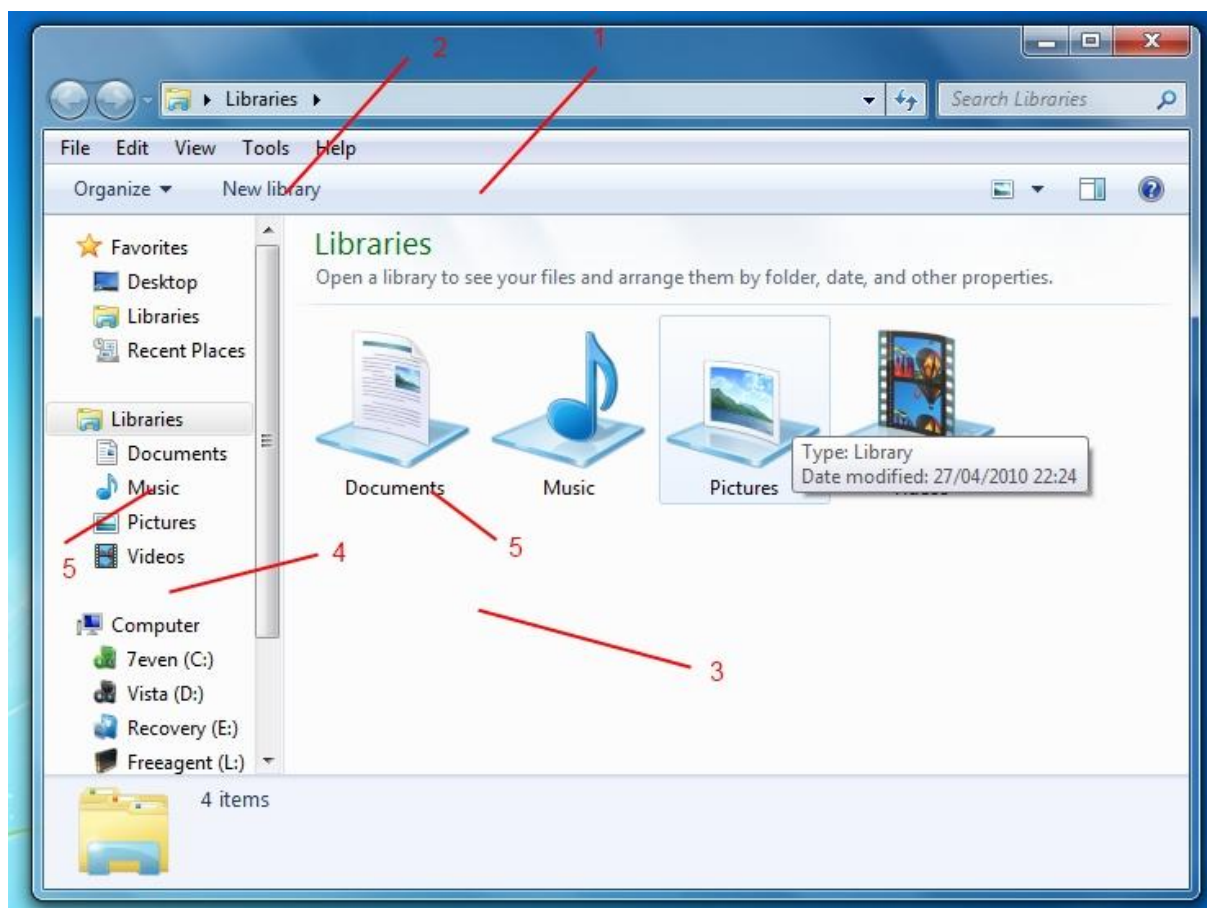
- 3-Explorer & Shell > Explorer > Items View > Items View > FillColor (main window)
- 4-Explorer & Shell > Explorer > Proper Tree > <2> - fillcolorhint : color (Left panel)

also the location to change the text in these area,s is -

- 5- Fonts , colors & System Metrics > Fonts & System Metrics > Windowtext:color

This text changes in both areas when selected, the locations for selected are here-

ItemsView(Main Window)-Explorer & Shell > Explorer > ItemsView > ItemsView > TextColor : Color
TreeView (Left Panel)-Explorer & Shell > Explorer > Treeview > Treeitem > hot , selected etc >
Textcolor : Color



[Re: how to changes to black msstyle](#)

 door [Dave Senior](#) » jun 26th, 2010, 3:13 pm

[Some more explorer locations -](#)

1-Toolbars , headers and rebar > toolbars and headers > toolbar > default> Textcolor :Color
(If you open up default you can change the text color for hot, pressed and so on)

2-Explorer and shell > explorer > menubar > background -edit the image

Toolbars, Headers and Rebar > Rebar > Rebar -edit the image

3-Address, Breadcrumbs & Search > Address > Address Band > Basic > Address Band > <1>

4-Address, Breadcrumbs & Search > Search > SearchBox > Basic > Normal > Active > <1>

5-buttons ,boxes & controls > Scrollbars & Trackers > Scrollbar > Thumb Button Vertical

6-buttons ,boxes & controls > Scrollbars & Trackers > Scrollbar > lower track vertical and upper track vertical

7-buttons ,boxes & controls > Scrollbars & Trackers > Scrollbar > Arrow Button - (for the buttons)
(for the actual arrows ,click on Glyph image 1 in WSB image preview window)

8-Explorer & Shell > Explorer > PreviewPane > <5> >TextColor:Color

Explorer & Shell > Explorer > PreviewPane > <6> >TextColor:Color

Explorer & Shell > Explorer > PreviewPane > <7> > <1> >TextColor:Color

Explorer & Shell > Explorer > PreviewPane > <7> > <2> >TextColor:Color

Explorer & Shell > Explorer > PreviewPane > <8> >TextColor:Color

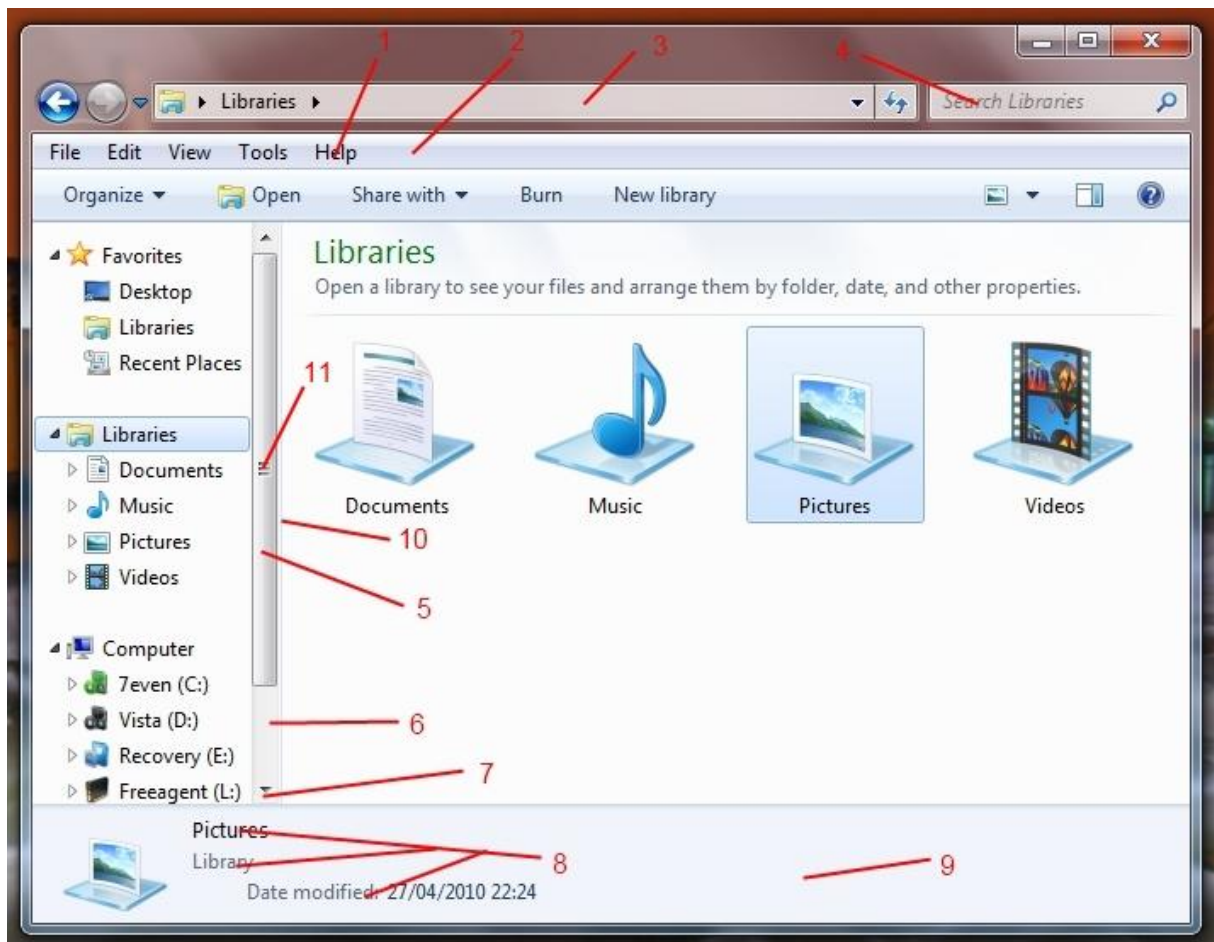
Explorer & Shell > Explorer > PreviewPane > <9> > <1> >TextColor:Color

Explorer & Shell > Explorer > PreviewPane > <9> > <2> >TextColor:Color

9-Explorer & Shell > Explorer > Preview Pane > 1 > <1> -- Edit the image

10-Explorer & Shell > Explorer > PreviewPane > <3> "(this is the white border at the side of the scroll bar)

11-buttons ,boxes & controls > Scrollbars & Trackers > Scrollbar > GripperVertical

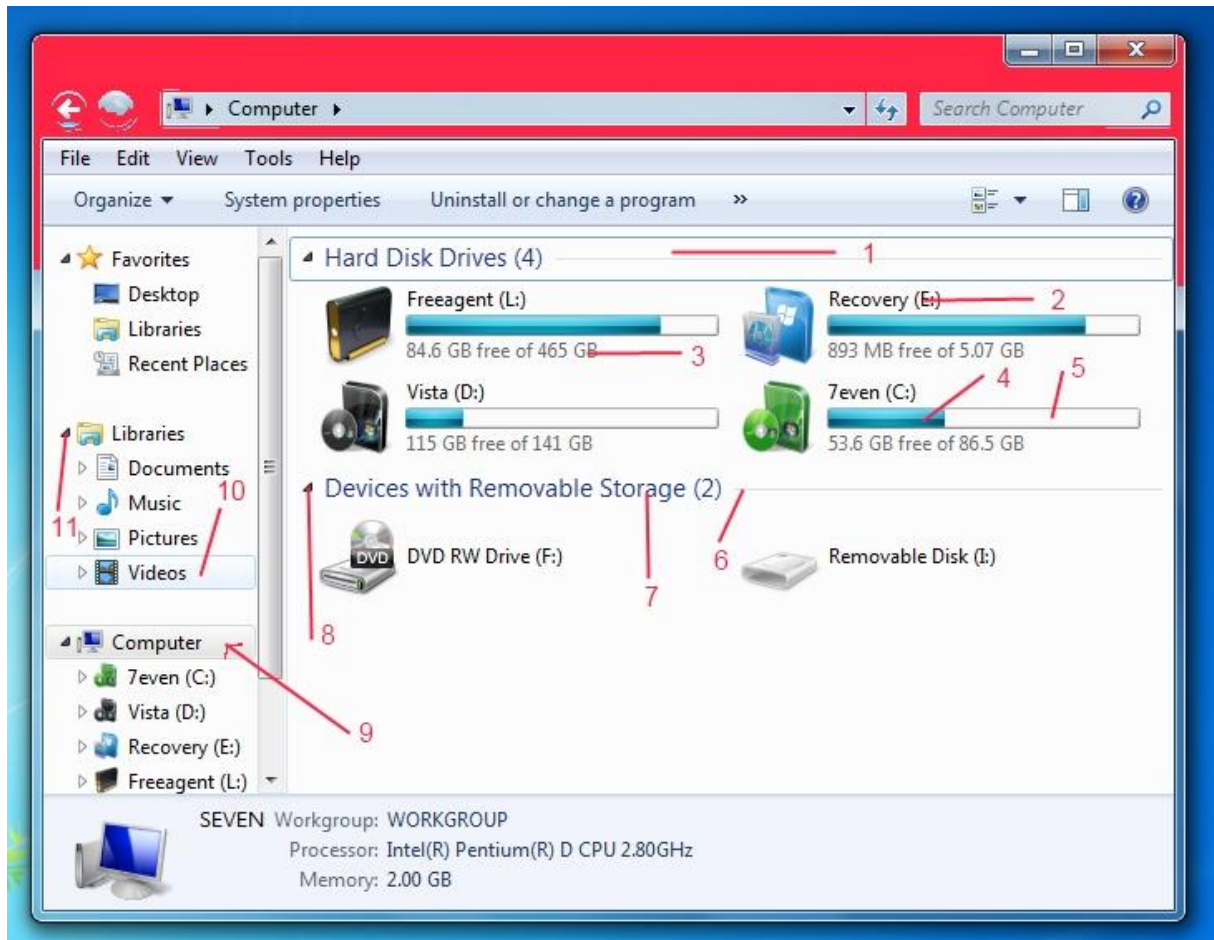


Re: how to changes to black msstyle

door [Dave Senior](#) » jun 26th, 2010, 4:27 pm

More Explorer Locations-

- 1--Explorer & shell > Explorer > Items view > listview > groupheader > <1> to <16> for the hovers
- 2-Fonts , Colors & System Metrics > Fonts & System Metrics > Windowtext:Color
- 3-Explorer & Shell > Explorer > Items View > Items View > SubHeader > Normal > TextColor : Color
- 4-Buttons ,Boxes & Controls > Progress bars > normal > Fill > <4>
- 5-Buttons ,Boxes & Controls > Progress bars > normal > transparentbar > <2>--edit this image
- 6-Explorer & Shell > Explorer >Items view > listview > groupheader line(for the line)
- 7-Explorer & Shell > Explorer >Items view > listview > groupheader > Heading1TextColor : Color(for the text)
- 8-Explorer & Shell > Explorer > Items View > List View > ExpandButton
- Explorer & Shell > Explorer > Items View > List View > CollapseButton
- 9 and 10-Explorer & Shell > Explorer > Tree View > Tree Item > Hot to Hot Selected
- 11-Explorer & Shell > Explorer > TreeView > Glyph and Hot Glyph



Re: how to changes to black msstyle

door [Dave Senior](#) » jun 26th, 2010, 8:05 pm

1-Address, Breadcrumbs & Search > Breadcrumb > Aero > Normal > Active & Inactive Crumbs > Textcolor:Color

2-Address, Breadcrumbs & Search > Search > Edit > SearchEdit > TextBox > Normal Text > TextColor:Color

Menubar Hover

3-Fonts, Color & System Metrics > Fonts & system Metrics > Highlight:Color

Uncheck this property to have a proper image instead.

Fonts, Colors & System Metrics > Fonts & System Metrics > FlatMenus:Bool

The image to edit for this is:

Toolbars, Headers and Rebar > Toolbars & Headers > Toolbar > Button
(Respect to MR GRiM for this one)

Command Module Hovers

4-Explorer & Shell > Explorer > CommandModule > <3>

5-Explorer & Shell > Explorer > CommandModule > <4>

6-Explorer & Shell > Explorer > CommandModule > <5>

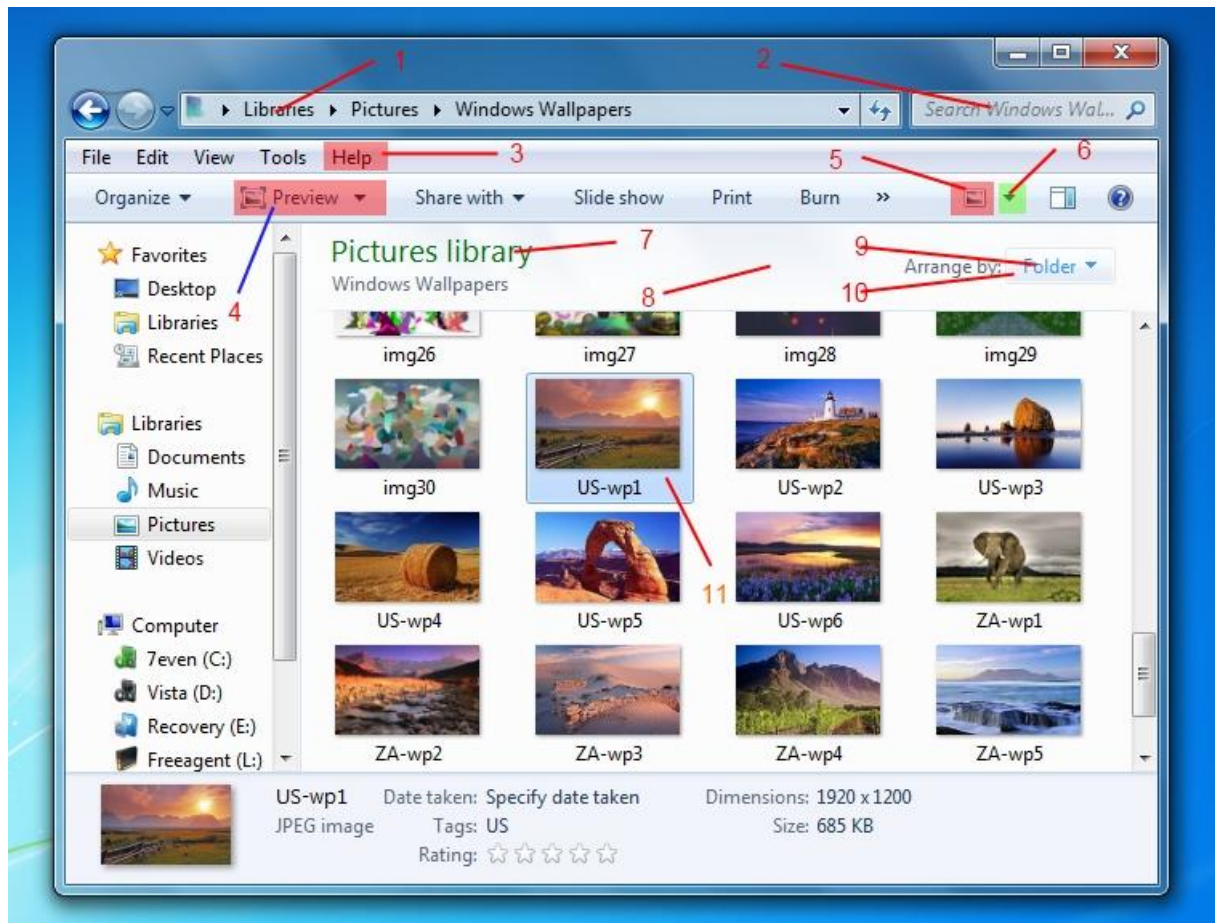
7-Explorer & Shell > Explorer > CommandModule > 10 > <1> -Textcolor : Color

8-Explorer & Shell > Explorer > CommandModule > <11> and <12> (background image)

9--Explorer & Shell > Explorer > CommandModule > <9> > <1> to <4> (for the textcolor)

10--Explorer & Shell > Explorer > CommandModule > <9> (for the image)

11-Explorer & Shell > Explorer > Itemsvew > Listview > Listitem > hot to hot selected



Re: how to changes to black msstyle

door [Dave Senior](#) » jun 27th, 2010, 12:44 pm

Explorer Frames , arrows , SplitButtons + Explorer HeaderItem--

1 and 2 -Address bar arrows -

Address, Breadcrumb & Search > Breadcrumb > Aero > Normal > Inactive Crumbs > SplitButtonDropDown

Address, Breadcrumb & Search > Breadcrumb > Basic > Normal > Overflow Active > <1>

Address, Breadcrumb & Search > Breadcrumb > Aero > Max > Inactive Crumbs > SplitButtonDropDown

Address, Breadcrumb & Search > Breadcrumb > Basic > Normal > Active Crumbs > Button
Address, Breadcrumb & Search > Breadcrumb > Basic > Normal > Active Crumbs > SplitButton
Address, Breadcrumb & Search > Breadcrumb > Basic > Normal > Active Crumbs >
SplitButtonDropDown
Address, Breadcrumb & Search > Breadcrumb > Basic > Normal > InActive Crumbs >
SplitButtonDropDown
Address, Breadcrumb & Search > Breadcrumb > Basic > Max > InActive Crumbs >
SplitButtonDropDown
Address, Breadcrumbs & Search > Address > Go Toolbar > Basic > Normal > Active > Button
Address, Breadcrumb & Search > Address > Go Toolbar > Basic > Normal > InActive > Button

3-Explorer & Shell > Explorer > Command Module > <6>

4-Toolbars , Headers & Rebar > Toolbars & Headers > Items View Header > headerDropDown (select
Glyph image DPI 96 in image preview window)

5-Toolbars , Headers & Rebar > Toolbars & Headers > Items View Header > headerDropDown

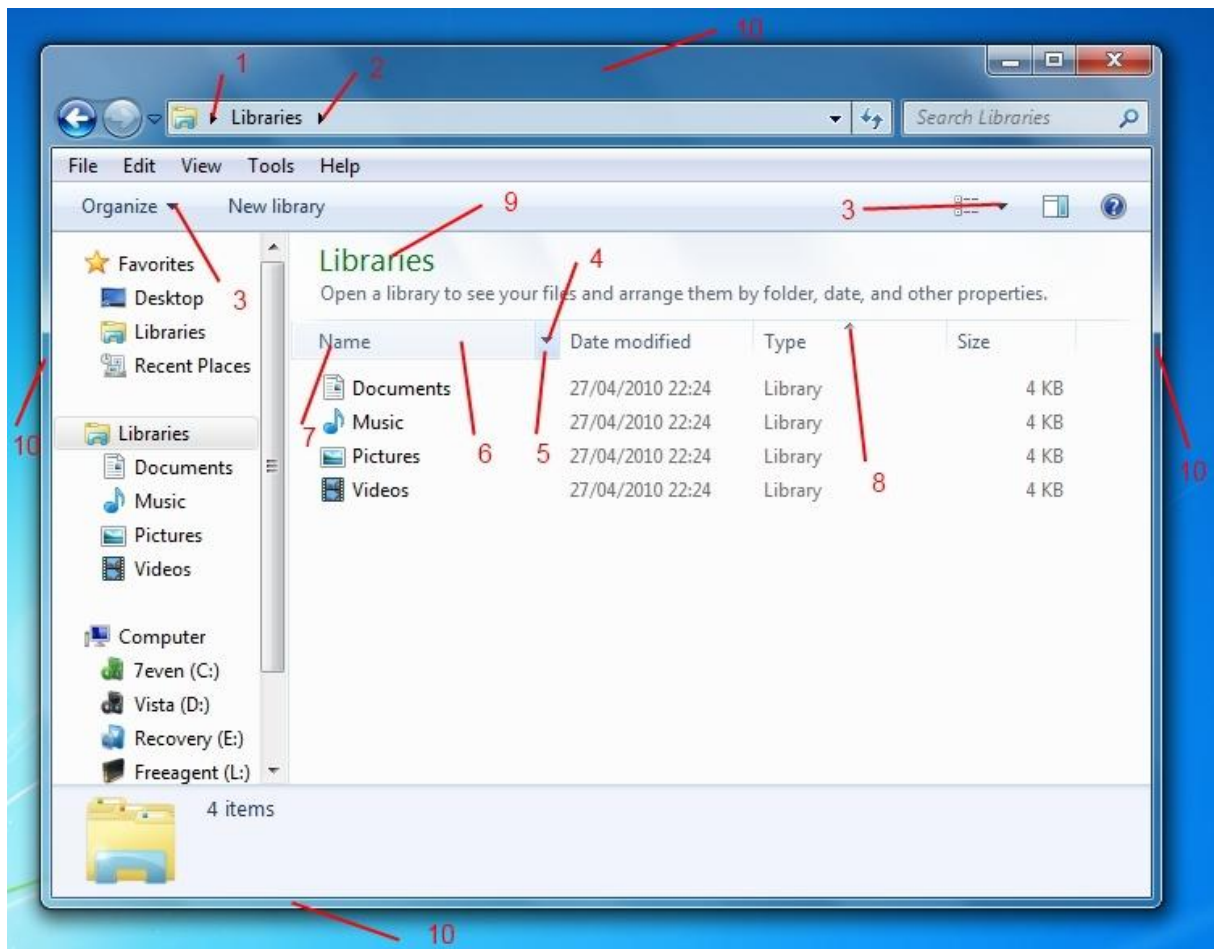
6-Toolbars , Headers & Rebar > Toolbars & Headers > Items View Header > HeaderItem

7-Toolbars , Headers & Rebar > Toolbars & Headers > Items View Header > HeaderItem > TextColor
:Color

8-Toolbars , Headers & Rebar > Toolbars & Headers > Items View Header > HeaderSortArrow

9-Explorer & Shell > Explorer > Command Module > <10> > <1> > TextColor : Color

10-Windows & Caption Buttons > Aero > DWM Window > Frames > Normal > Bottom , Left , Right and
Top



Re: how to changes to black msstyle

door [Dave Senior](#) » jun 27th, 2010, 1:57 pm

A few Explorer menu,s-

1-Toolbars , Headers & Rebar > Toolbars & Headers > List View Pop Up (Bottom) > TextColor:Color

2-Buttons ,Boxes & Controls > Boxes > Edit > Basic > Edit Text > Disabled > TextColor:Color

3-Toolbars , Headers & Rebar > Toolbars & Headers > List View Pop Up

Toolbars , Headers & Rebar > Toolbars & Headers > List View Pop Up (Bottom) > Button

4-Explorer & Shell > Explorer > ListView > ListItem > Selected

5-Most Dropdown and Menu popup,s (Not All) can be found here-

Lists, menu,s & tabs > menu > popupbackground

Lists, menu,s & tabs > menu > popupborders

Lists, menu,s & tabs > menu > popupcheck

Lists, menu,s & tabs > menu > popupcheckbackground

Lists, menu,s & tabs > menu > popupgutter

Lists, menu,s & tabs > menu > popupitem

Lists, menu,s & tabs > menu > popupseparator

Lists, menu,s & tabs > menu > popupsbmenu

6-Buttons , Boxes & Controls > Scrollbars & Trackers > Trackbar > ThumbRight

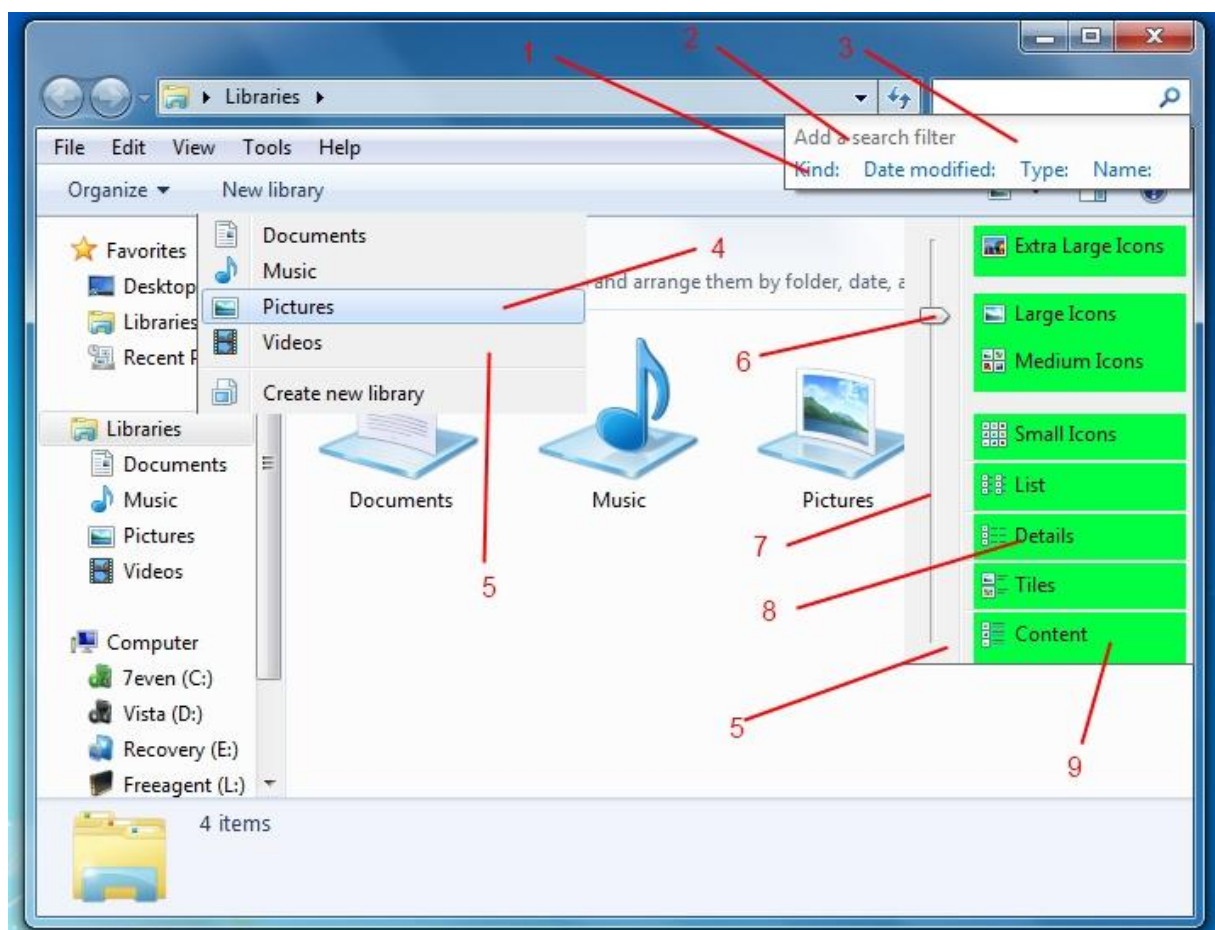
7-Buttons , Boxes & Controls > Scrollbars & Trackers > Trackbar > TrackVertical

8-Toolbars , Headers & Rebar > Toolbars & Headers > ToolBar > Default > TextColor : Color

(If you open Default up you can change the textcolor for hot = mouse over -pressed etc).

9-Toolbars , Headers & Rebar > Toolbars & Headers > ToolBar > Default > FillColor : Color

Some of the Black Text in Explorer drop down menu,s remain unlocated.



[Re: Complete Guide to Theme Building](#)

door [Dave Senior](#) » jun 29th, 2010, 10:49 am

Personalize Window-

1-Styles > ControlPanelStyle > Tasklink > TextColor : Color

Styles > ControlPanelStyle > Tasklink > hot , pressed etc (for the hovers and selected states)

2-Styles > ControlPanelStyle > NavigationpaneLabel > textcolor : color

3-(The black background)these are bitmap number 632 & 633 found in Shell32.dll in system32 folder

4-Styles > ControlPanelStyles > Title > TextColor : Color

5-Styles > ControlPanelStyles > BodyText > TextColor : Color

6-Explorer & Shell > Explorer > Itemsview > listview > groupheader > heading1textcolor : color

Explorer & Shell > Explorer >Items view > listview > groupheader line (for the line)

7-Explorer & Shell > Explorer > ListView > List Item > Hot to hot selected

8-Explorer & Shell > Explorer > Itemsview > itemswiew > textcolor : color

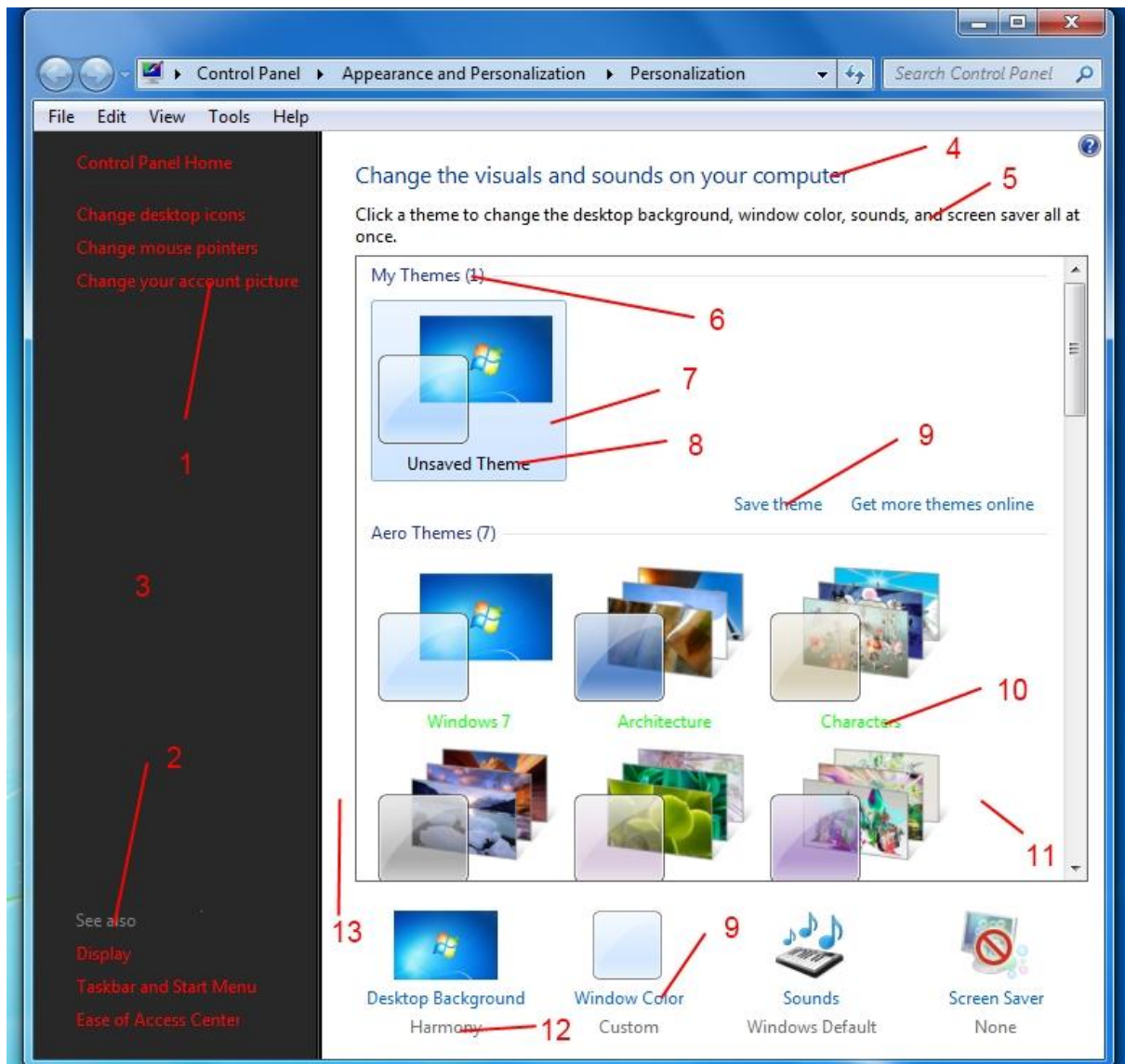
9-Styles > ControlPanelStyles > ContentLink > TextColor (open this section up for hot ,, pressed etc)

10-Fonts , Colors & System Metrics > Fonts & System Metrics > WindowText:Color

11-Fonts , Colors & System Metrics > Fonts & System Metrics > WindowColor:Color

12-Fonts , Colors & System Metrics > Fonts & System Metrics > GrayText:Color (I,d forgot where this was, Thanks!)

13-Explorer & Shell > Explorer > Control Panel > ControlPanel > ContentPane > FillColor : Color



Re: Complete Guide to Theme Building

door [Dave Senior](#) » jun 29th, 2010, 1:55 pm

System Window-

1-Styles > ControlPanelStyle > Tasklink > TextColor : Color

Styles > ControlPanelStyle > Tasklink > hot , pressed etc (for the hovers and selected states)

2-Styles > ControlPanelStyles > Title > TextColor : Color

3-Styles > ControlPanelStyles > GroupText > TextColor : Color

4-Explorer & Shell > Explorer > Control Panel > ControlPanel > ContentPanelLine > FillColor : Color

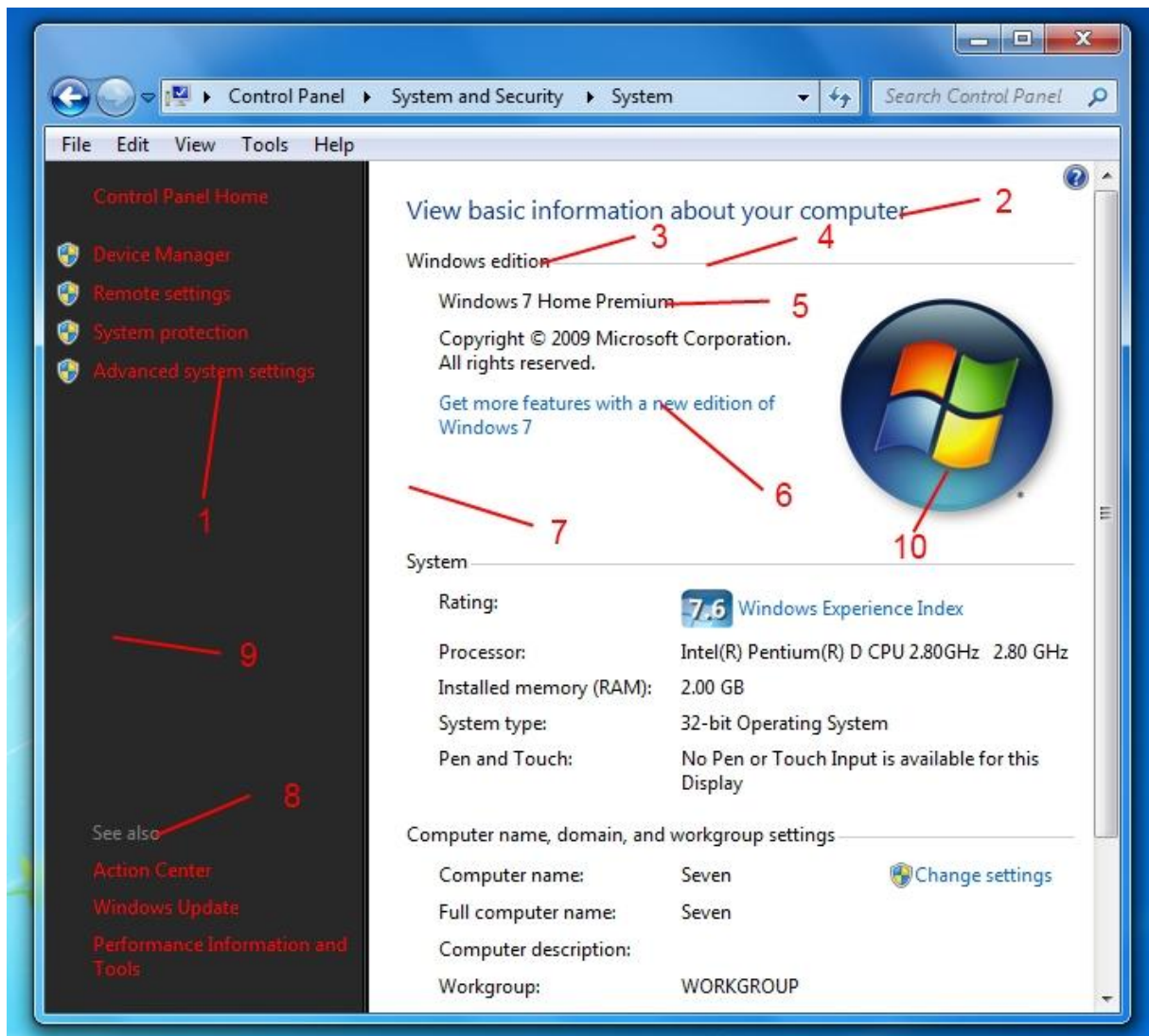
5-Styles > ControlPanelStyles > BodyText : TextColor : Color

6-Styles > ControlPanelStyles > ContentLink > TextColor : Color (open this section up for hot ,, pressed etc)

7-Explorer & Shell > Explorer > Control Panel > ControlPanel > ContentPane > FillColor : Color

8-Styles > ControlPanelStyle > NavigationpaneLabel > textcolor : color

9-(The black background)these are bitmap number 632 & 633 found in Shell32.dll in system32 folder
 10-See here to change System Orb- Thanks for this lads!



[Re: Complete Guide to Theme Building](#)

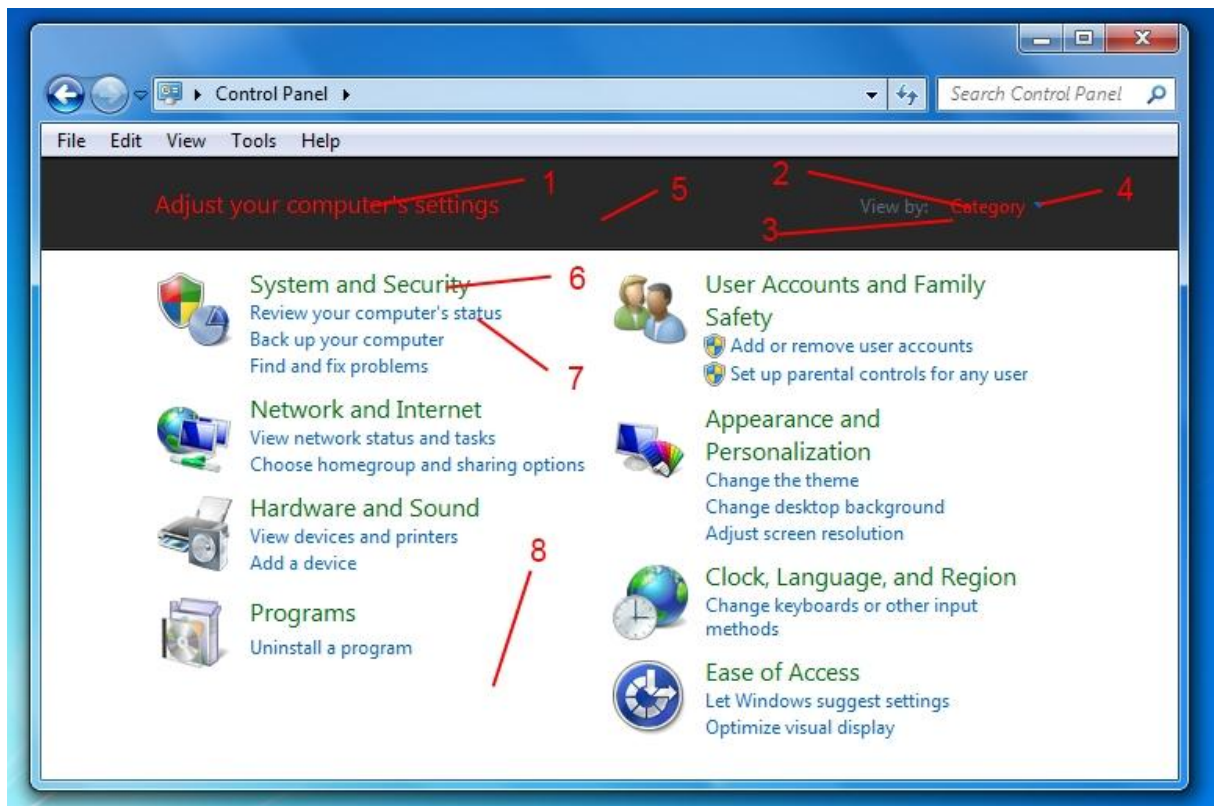
door [Dave Senior](#) » jun 29th, 2010, 2:59 pm

System Settings Window-

- 1-Styles > ControlPanelStyles > Title > TextColor : Color
- 2-Explorer & Shell > Explorer > CommandModule > <9> > <1> to <4> (for the textcolor)
- 3-Explorer & Shell > Explorer > CommandModule > <9> (for the image)
- 4-Explorer & Shell > Explorer > CommandModule > <8> (for the arrow image)
- 5-(Black Background) is Bitmap number 634 and 635 in Shell32.dll in System32 folder.
- 6-Styles > ControlPanelStyles > SectionTitleLink > TextColor : Color (open this section up for hot etc)

7-Styles > ControlPanelStyles > ContentLink > TextColor : Color (open this section up for hot etc)

8-Explorer & Shell > Explorer > Control Panel > ControlPanel > Content Pane > FillColor : Color



Re: Complete Guide to Theme Building

door [Dave Senior](#) » jun 30th, 2010, 2:38 pm

Hi ,this ones mainly to locate the Control Panel Command Module image and text-(3 and 4)-

1-Explorer & Shell > Explorer > Control Panel > Control Panel >Content Pane > FillColor

2-Styles > Control Panel Styles > Title > TextColor:Color

3-Explorer & Shell > Explorer > Control Panel > CommandModule > Unknown > Unknown > TextColor:Color

(The first one)

4-Explorer & Shell > Explorer > Control Panel > CommandModule > BackGround

5-Fonts , Colors & System Metrics > Fonts & System Metrics > WindowText:Color

6-Explorer & Shell > Explorer > Itemsview > ItemsView > SubHeader > Normal > TextColor:Color

7-Explorer & Shell > Explorer > Items View > Items View > FillColor

8-Explorer & Shell > Explorer > Preview Pane > 1 > <1> -- Edit the image

9-Explorer & Shell > Explorer > PreviewPane > <5> >TextColor:Color

Explorer & Shell > Explorer > PreviewPane > <6> > TextColor:Color

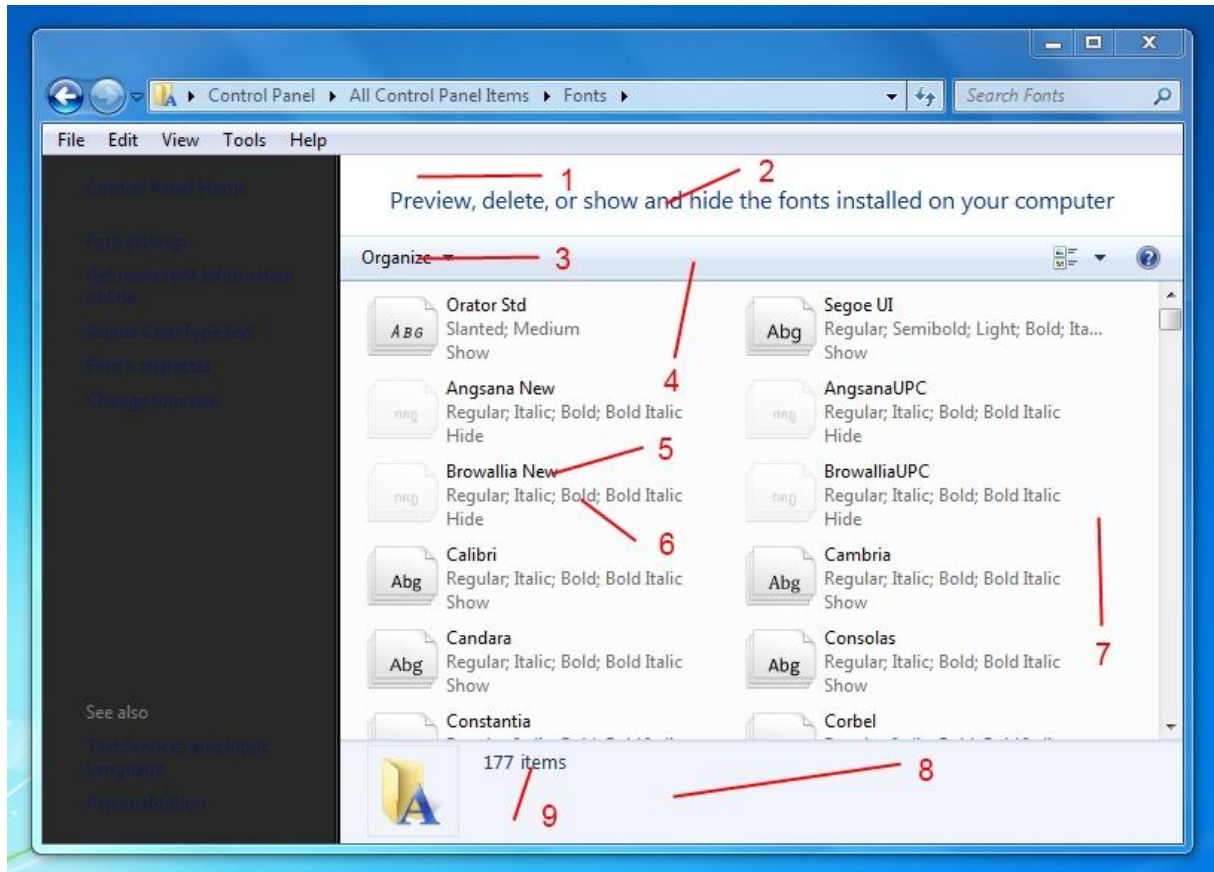
Explorer & Shell > Explorer > PreviewPane > <7> > <1> > TextColor:Color

Explorer & Shell > Explorer > PreviewPane > <7> > <2> > TextColor:Color

Explorer & Shell > Explorer > PreviewPane > <8> > TextColor:Color

Explorer & Shell > Explorer > PreviewPane > <9> > <1> > TextColor:Color

Explorer & Shell > Explorer > PreviewPane > <9> > <2> > TextColor:Color



Re: Complete Guide to Theme Building

door **Dave Senior** » jun 30th, 2010, 4:12 pm

Copy Window-

1-Styles > TaskDialogStyles > ContentPane > TextColor : Color

2-For the black background see here:- viewtopic.php?f=6&t=1830 (manual method)

viewtopic.php?f=105&t=3363 -A great app by Fixit that does all the hard work for you

3-Styles > TextStyle > BodyTitle > Font : Font -To change this Font

4-Explorer & Shell > Shell > Taskdialog > Expando button > normal, hot etc--edit these 6 images for the arrow

5-Styles > TaskDialogStyles > ExpandoText > TextColor : Color

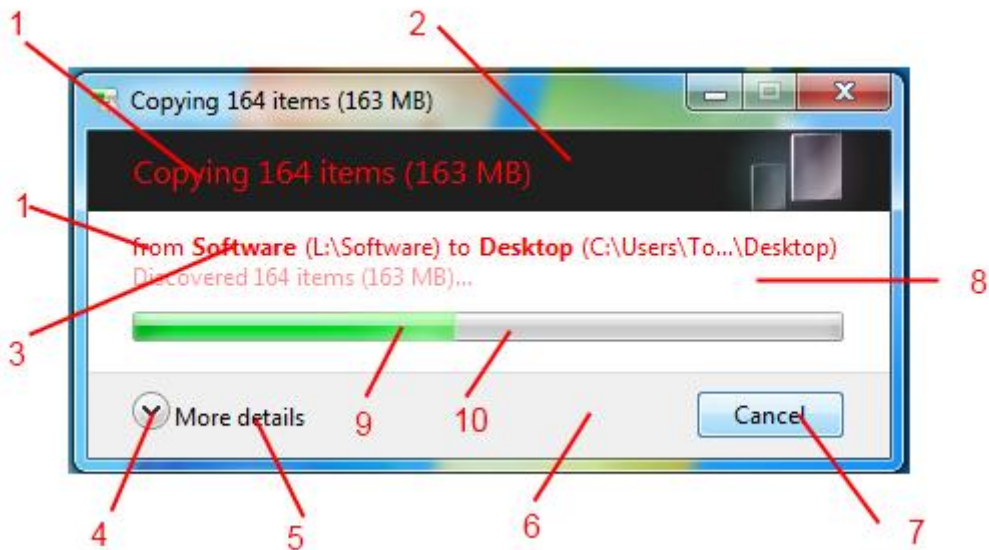
6-Explorer & Shell > Shell > Taskdialog > SecondaryPanel - edit this image

7-Buttons ,Boxes & Controls > Buttons > Button > Pushbutton- edit this image for the button

8-Explorer & Shell > Shell > TaskDialog > PrimaryPanel > FillColor : Color

9-Buttons,Boxes,Controls> Progressbars > normal> fill -edit this image

10-Buttons,Boxes,Controls> Progressbars > normal> transparentbar -edit this image



[Re: Complete Guide to Theme Building](#)

door [Dave Senior](#) » jul 3rd, 2010, 12:47 pm

Start Menu-

1-StartMenus > Panels > Aero > Top > ProgramsListSeparator

2-StartMenu > Panels > Aero > Top > Programs List

StartMenu > Panels > Aero > Top > Programs ListExtended

StartMenu > Panels > Aero > Top > NCShost

3-StartMenu > Panels > Aero > Top > openBox

StartMenus > Panels > Aero > Top > openBoxExtended

4-StartMenu > Panels > Aero > Top > Places list

StartMenu > Panels > Aero > Top > Places list extended

5-StartMenu > Panels > Aero > Top > PlacesListSeparator

6-StartMenu > Panels > Aero > Top > logoff>

StartMenu > Panels > Aero > Top > logoff extended

7-StartMenu > Panels > Aero > Top > More Programs

StartMenu > Panels > Aero > Top > More ProgramsExtended

8-StartMenu > Panels > Basic > MoreProgramsTab

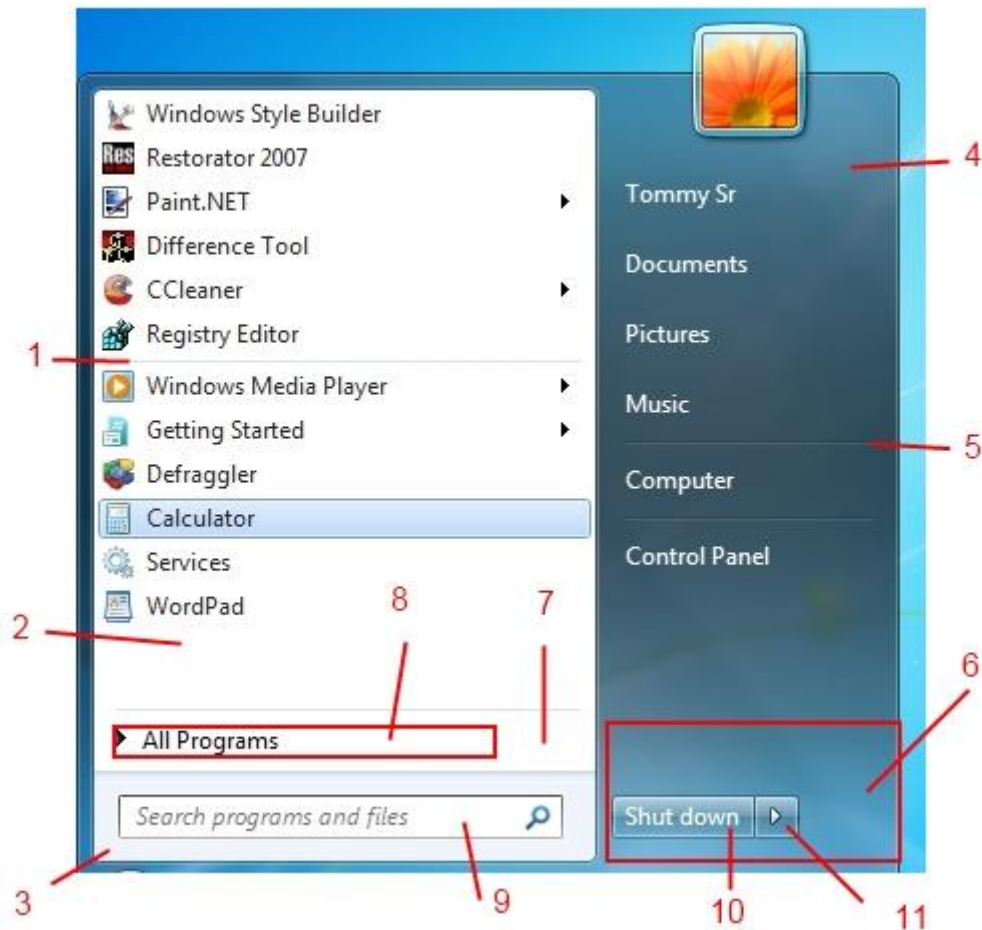
9-Address, Breadcrumbs & Search > Search > SearchBox > Basic > Normal > Active > <1>

10-StartMenu > Panels > Basic > logoffSplitButtonLeft

StartMenu > Panels > Basic > logoffSplitButtonLeftExtended

11-StartMenu > Panels > Basic > logoffSplitButtonRight

StartMenu > Panels > Basic > logoffSplitButtonRightExtended



[Re: Complete Guide to Theme Building](#)

door [Dave Senior](#) » jul 3rd, 2010, 12:50 pm

Start Menu 2 -

1-StartMenu > Panels > Basic > Listitem

2-StartMenu > Panels > Basic > JumplistListitemLeft

3-StartMenu > Panels > Basic > Programs List > TextColor: Color and HotTracking : Color

StartMenu > Panels > Basic > Programs ListExtended > TextColor: Color and HotTracking : Color

4-StartMenu > Panels > Basic > JumplistListitemSplitButtonRight

5-StartMenu > Panels > Basic > JumpListArrow

6-Bitmap Image 7013 in Explorer .Exe .

Or you can go to -- StartMenus > Panels > Basic > UserPane > and deselect UserPicture : Bool to disable this image.

7-StartMenu > Panels > Basic > Places list > TextColor: Color and HotTracking : Color

StartMenu > Panels > Basic > Places list extended > TextColor: Color and HotTracking : Color

8-StartMenu > Panels > Basic > logoffSplitButtonRight - (Glyph Image DPI 96 option in wsb preview window)

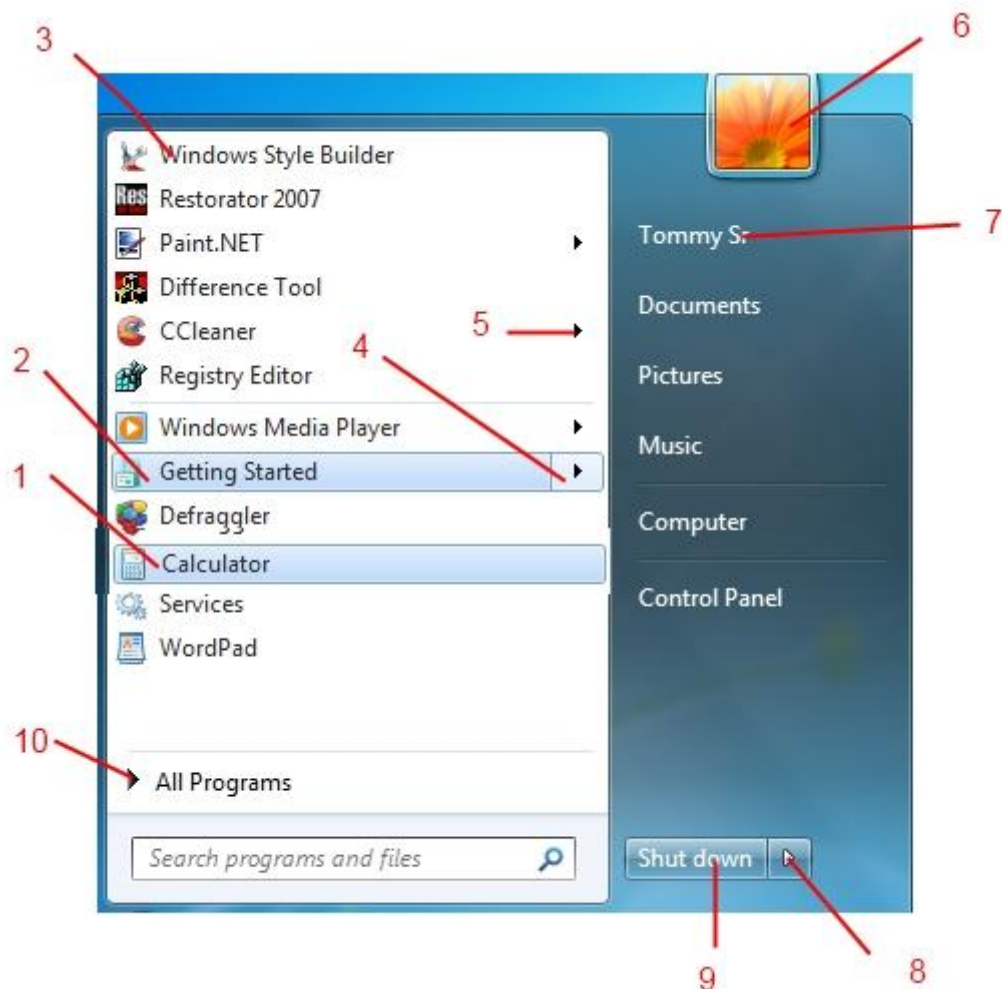
StartMenu > Panels > Basic > logoffSplitButtonRightExtended -(Glyph Image DPI 96 option in wsb preview window)

9-StartMenu > Panels > Basic > logoffSplitButtonLeft > TextColor: Color

StartMenu > Panels > Basic > logoffSplitButtonLeftExtended > TextColor: Color

10-StartMenu > Panels > Basic > MoreProgramsArrow

StartMenu > Panels > Basic > MoreProgramsArrowBack



[Re: Complete Guide to Theme Building](#)

 door [Dave Senior](#) » jul 3rd, 2010, 12:56 pm

Start Menu 3-

1-StartMenu > Menu,s > Aero > PlaceList : ListView > GroupHeader > Heading1TextColor : Color

2-StartMenu > Menu,s > Aero > PlaceList : ListView > GroupHeaderLine

3-StartMenu > Panels > Basic > JumplistitemSplitButtonLeft

4-StartMenu > Panels > Basic > JumplistitemSplitButtonRight

5-StartMenu > Panels > Basic > Jumplistitem

6-StartMenu > Menu,s > Basic > ToolBar > Button

7-StartMenu > Menu,s > Basic > ToolBar > TextColor : Color

8-StartMenu > Menu,s > Basic > MenuBand > Separator

9-StartMenu > Menu,s > Basic > ToolBar

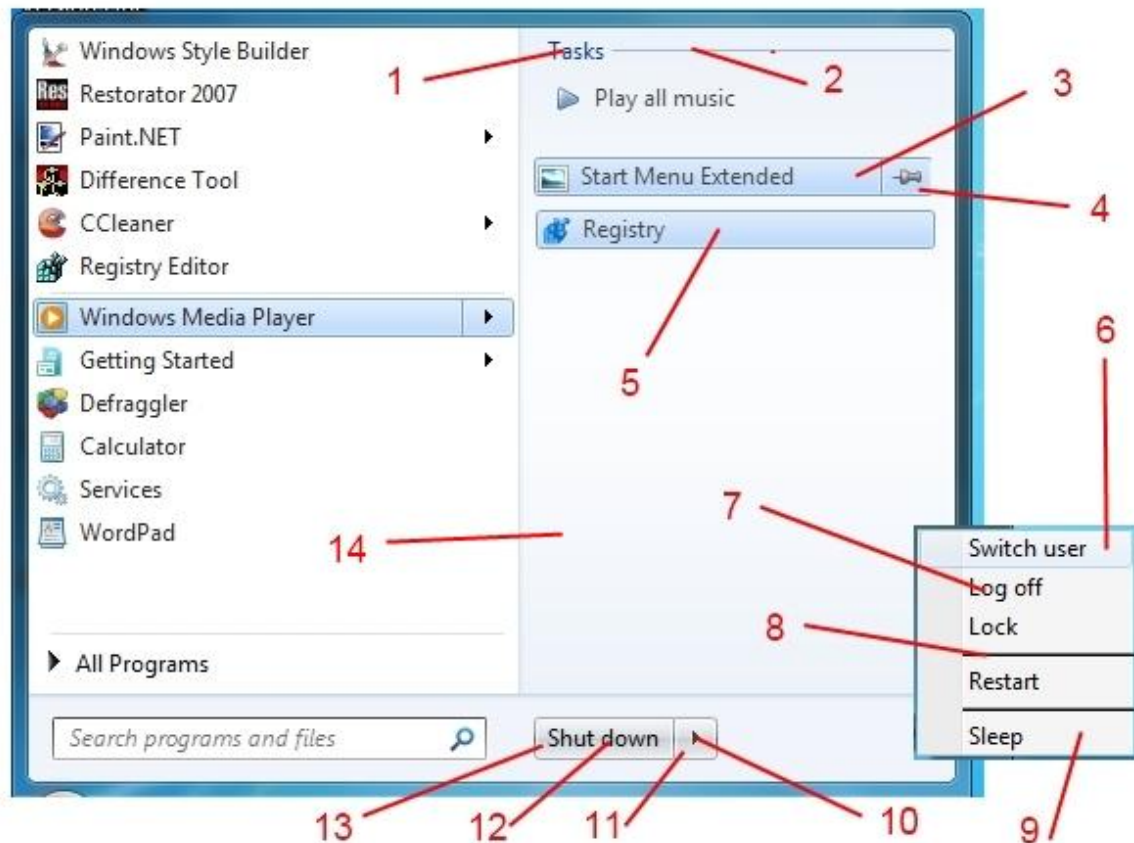
10-StartMenu > Panels > Basic > logoffSplitButtonRightExtended -(Glyph Image DPI 96 option in wsb preview window)

11-StartMenu > Panels > Basic > logoffSplitButtonRightExtended

12-StartMenu > Panels > Basic > logoffSplitButtonLeftExtended > TextColor: Color

13-StartMenu > Panels > Basic > logoffSplitButtonLeftExtended

14-StartMenu > Panels > Aero > Top > Places list extended



[Re: Complete Guide to Theme Building](#)

door [Dave Senior](#) » jul 4th, 2010, 4:57 pm

Start Menu All Programs Selected list-

1-StartMenu > Menu,s > Basic > Hover : TreeView > Treeltem > Hot

When selected becomes ---- Explorer & Shell > Explorer > TreeView > Treeltem > HotSelected

2-Explorer & Shell > Explorer > TreeView > FillColor : Color

3-buttons ,boxes & controls > Scrollbars & Trackers > Scrollbar > Thumb Button Vertical

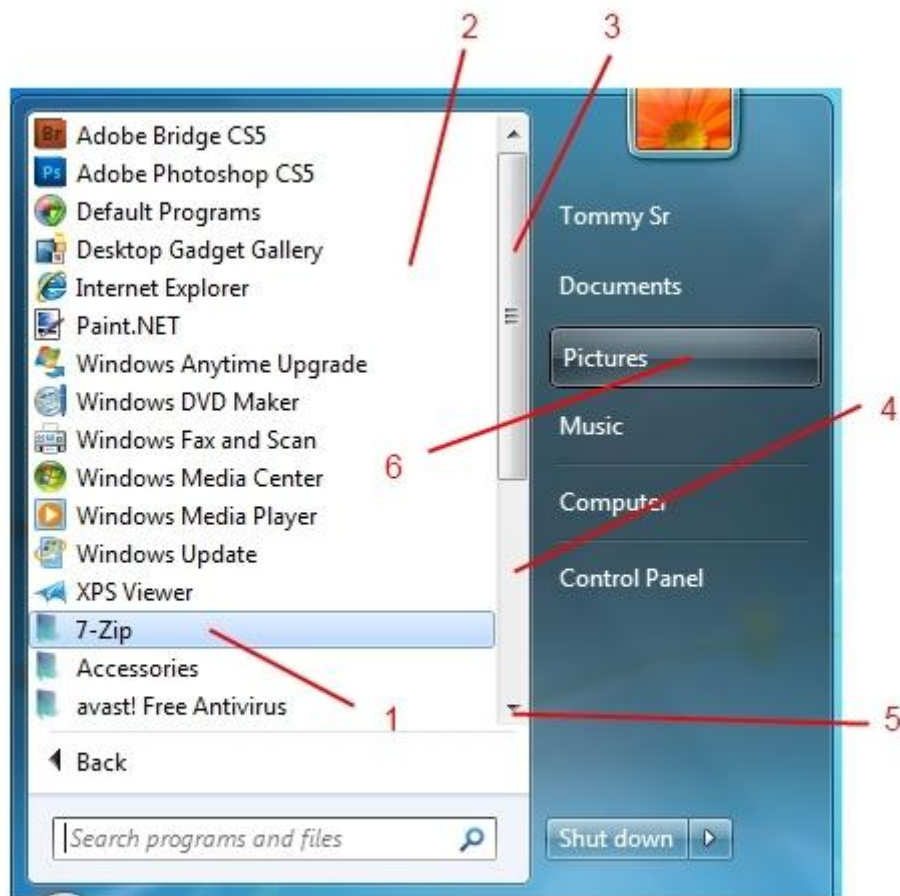
4-buttons ,boxes & controls > Scrollbars & Trackers > Scrollbar > lower track vertical and upper track vertical

5-buttons ,boxes & controls > Scrollbars & Trackers > Scrollbar > Arrow Button - (for the buttons)
(for the actual arrows ,click on Glyph image 1 in WSB image preview window)

6-StartMenus > Panels > Basic > PlacesListHover

This topic about the all programs selected list may also be of interest.If you only want to change the text color just add the text color properties listed in this topic.

[viewtopic.php?f=63&t=1544](#)



[Re: Complete Guide to Theme Building](#)

door [Dave Senior](#) » jul 5th, 2010, 12:33 pm

StartMenu MoreResults Window-

1-Explorer & Shell > Explorer > Itemsview > listview > groupheader > heading1textcolor : color

2-Fonts , colors & System Metrics > Fonts & System Metrics > Windowtext:color

(MouseOver)-Explorer & Shell > Explorer > ItemsView > ItemsView > TextColor : Color

3-StartMenu > Panels > Basic > MoreResults > TextColor : Color

4-StartMenus > Panels > Aero > Top > SearchView

5-StartMenus > Panels > Aero > Top > MoreResults

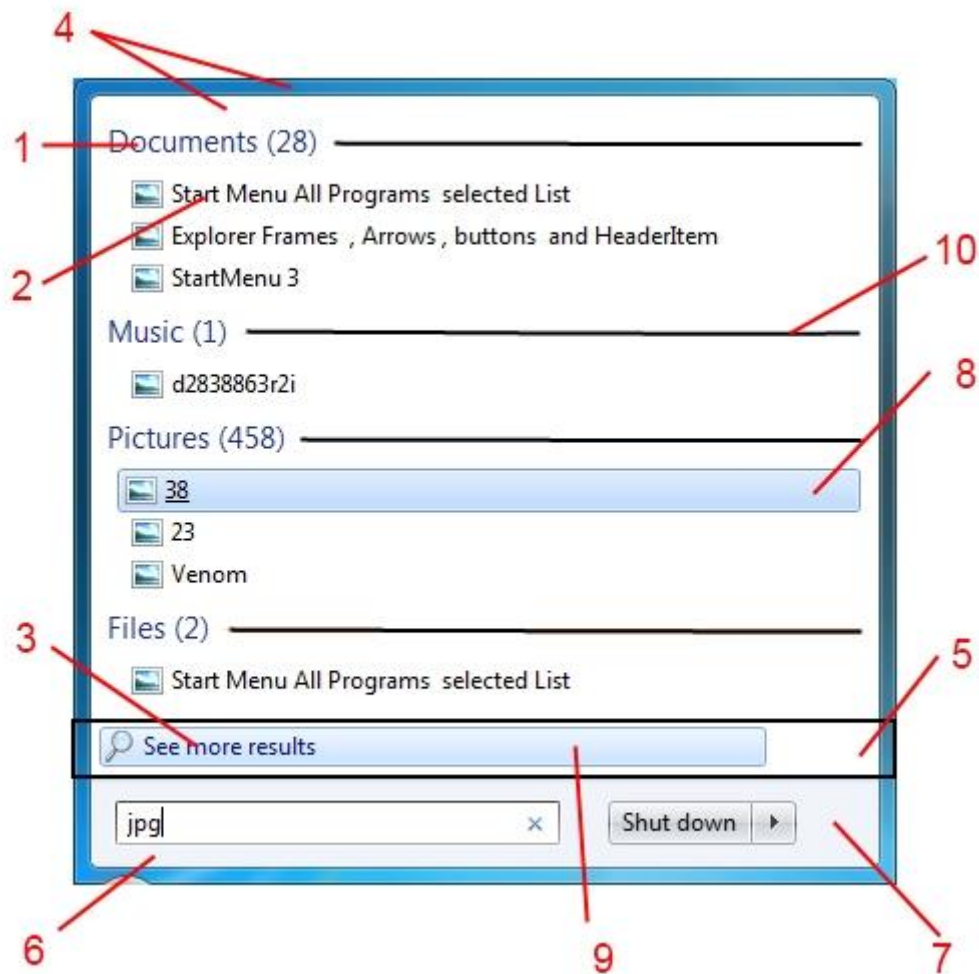
6-StartMenus > Panels > Aero > Top > OpenboxExtended

7-StartMenus > Panels > Aero > Top > LogoffExtended

8-Explorer & Shell > Explorer > Itemsview > Listview > Listitem > hot selected

9-Explorer & Shell > Explorer > Listview > Listitem > hot selected

10-Explorer & Shell > Explorer > Items view > listview > groupheader line



[Re: Complete Guide to Theme Building](#)

door [Dave Senior](#) » jul 5th, 2010, 2:27 pm

Task Manager-

1-Lists , Menus & Tabs > Tab > TopTabItem

2-Lists, Menus & Tabs > Tab > TopTabItemLeftEdge

3-Lists , Menus & Tabs > Tab > TopTabItemRightEdge

4-Lists, Menus & Tabs > Menu > Bar Background

5-Fonts , Colors & System Metrics > Fonts & System Metrics > BTNFACE : COLOR

6-Lists , Menus & Tabs > ListView > BorderColor : Color

7-Lists , Menus & Tabs > Tab > Pane

8-Fonts , Colors & System Metrics > Fonts & System Metrics > WINDOW : COLOR

9-Explorer & Shell > Explorer > ListView > ListItem > Hot

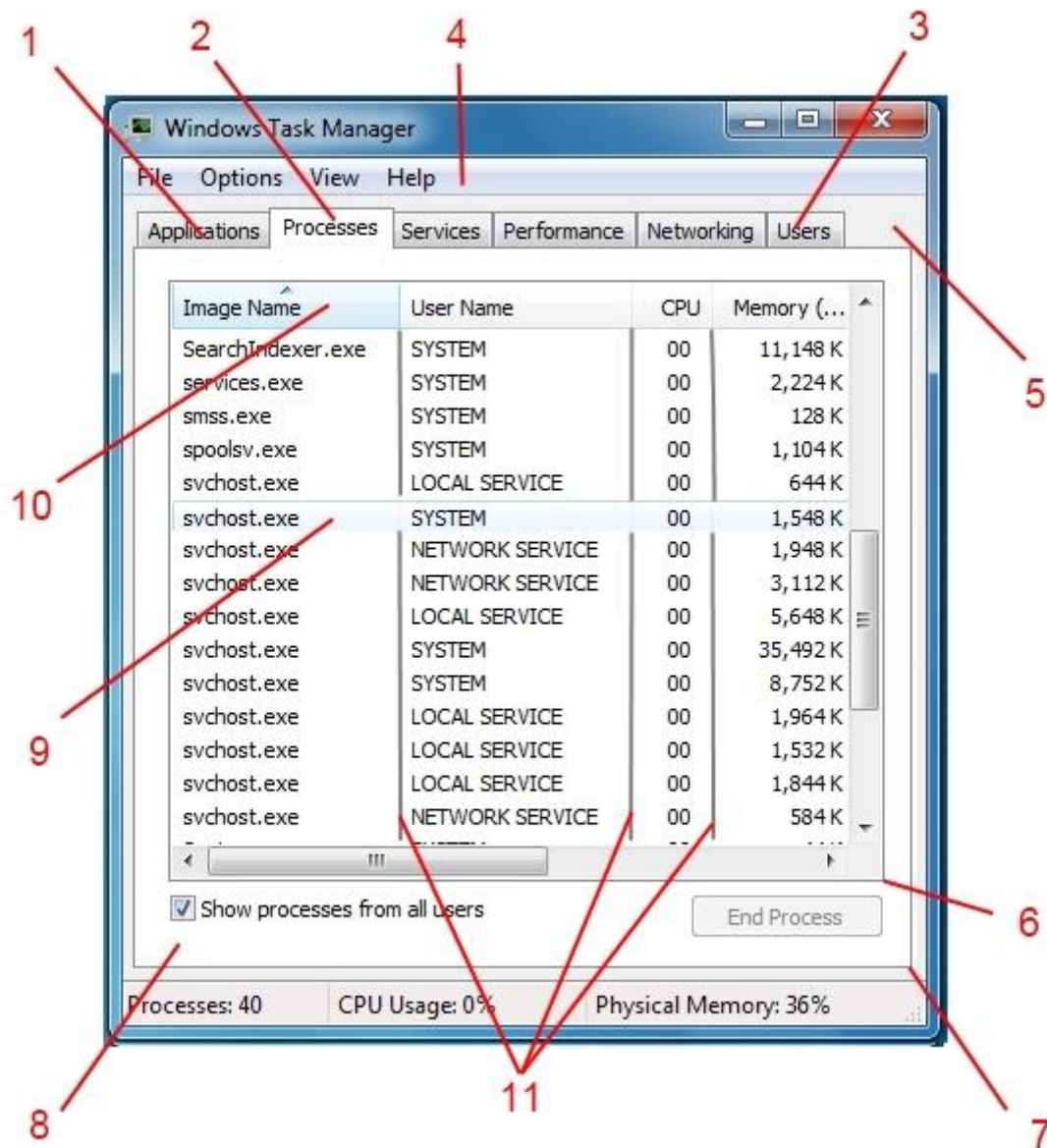
10-Toolbars, Headers & Rebar > Toolbars & Headers > Header > Header Item -(Left)

Toolbars, Headers & Rebar > Toolbars & Headers > Header - (Right area ,when full Screen)

11-Lists , Menus & Tabs > ListView > ColumnDetail

Here is a link to a great app by Fixit to further customise Task Manager-

viewtopic.php?f=6&t=2159



[Re: Complete Guide to Theme Building](#)

door [Dave Senior](#) » jul 5th, 2010, 2:31 pm

TaskManager 2-

1-Lists , Menus & Tabs > Menu > BarItem > Textcolor : Color

2-Lists , Menus & Tabs > Menu > BarItem (The Hover Image)

3-Fonts , Colors & System Metrics > Fonts & System Metrics > WindowText :Color

4-buttons ,boxes & controls > Scrollbars & Trackers > Scrollbar > Thumb Button Horizontal

5-buttons ,boxes & controls > Scrollbars & Trackers > Scrollbar > Arrow Button - (for the buttons)
(for the actual arrows ,click on Glyph image 1 in WSB image preview window)

6-buttons ,boxes & controls > Scrollbars & Trackers > Scrollbar > lower track Horizontal and upper track Horizontal

7-Buttons , Boxes & Controls > Buttons > Button > CheckBox

8-Toolbars , Headers & Rebar > Toolbars & Headers > Status

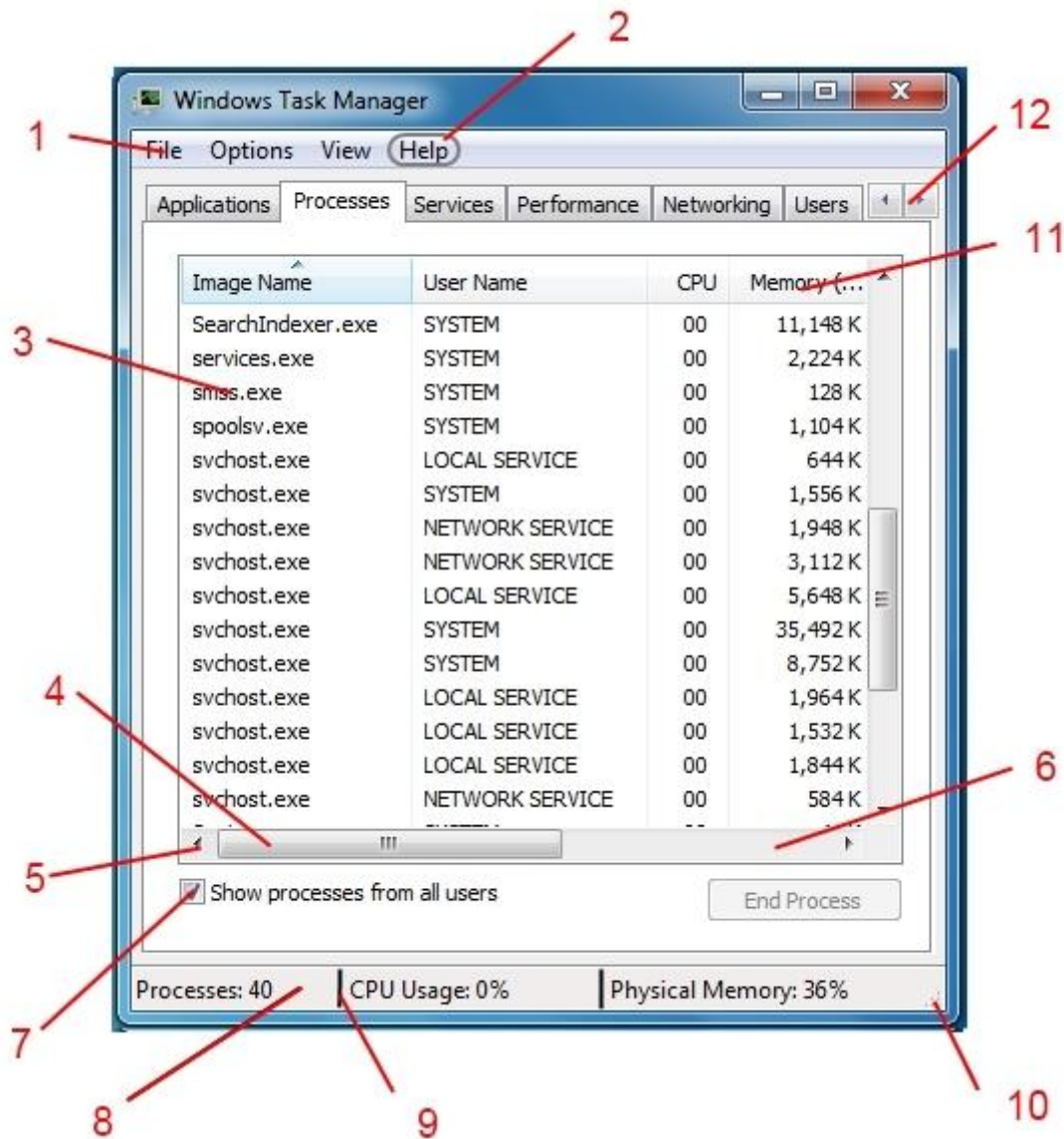
9-Toolbars , Headers & Rebar > Toolbars & Headers > Status > Pane

10-Toolbars , Headers & Rebar > Toolbars & Headers > Status > Gripper

11-Fonts , Colors & System Metrics > Fonts & System Metrics > BTNTEXT : COLOR

12-Buttons , Boxes & Controls > Buttons > Spin > UpHorizontal and DownHorizontal
(click on Glyph image , DPI 96 for the arrows)

Here is a link to a great app by Fixit to further customise Task Manager



[Re: Complete Guide to Theme Building](#)

door [Dave Senior](#) » jul 5th, 2010, 3:42 pm

TaskBar and StartMenu Properties Window-

- 1-Fonts , Colors & System Metrics > Fonts & System Metrics > BtnFace : Color
- 2-Lists, Menus & Tabs > Tab > TopTabItemLeftEdge
- 3-Lists, Menus & Tabs > Tab > TopTabItem
- 4-Lists , Menus & Tabs > Tab > Pane
- 5-Lists , Menus & Tabs > Tab > Body
- 6-Buttons , Boxes & Controls > Buttons > Button > GroupBox
- 7-Buttons , Boxes & Controls > Boxes > ComboBox > ReadOnly

8-Buttons , Boxes & Controls > Boxes > ComboBox > DropDownButtonRight

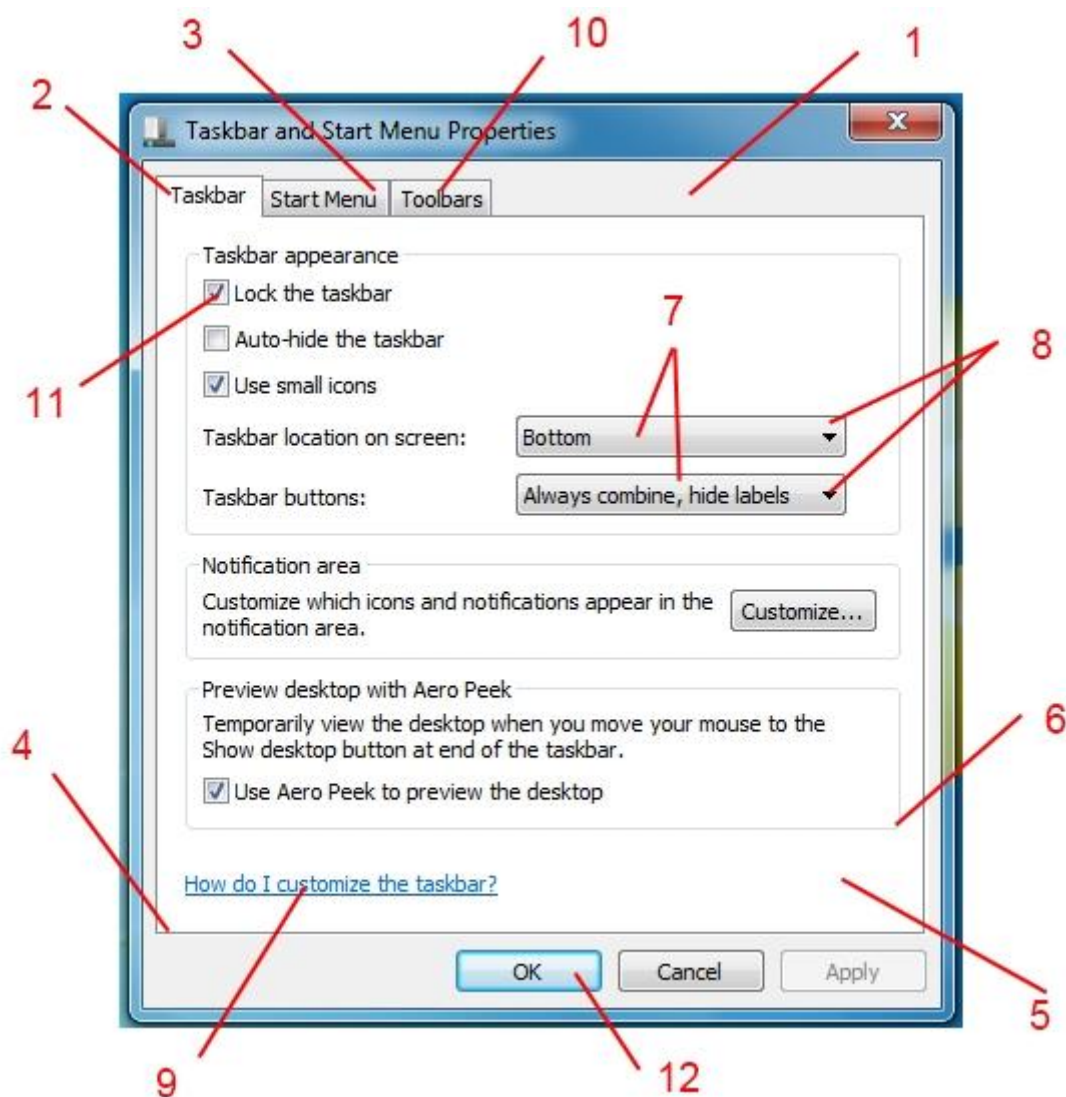
Buttons , Boxes & Controls > Boxes > ComboBox > DropDownButtonRight- (Select Glyph Image DPI 96 in WSB preview window for the arrow)

9-Fonts , Colors & System Metrics > Fonts & System Metrics > HotTracking : Color

10-Lists , Menus & Tabs > Tab > TopTabItemRightEdge

11-Buttons , Boxes & Controls > Buttons > Button > CheckBox

12-Buttons , Boxes & Controls > Buttons > Button > PushButton



[Re: Complete Guide to Theme Building](#)

door [Dave Senior](#) » jul 6th, 2010, 12:28 pm

Jump List-

1-StartMenu > Menu,s > Aero > PlaceList : ListView > GroupHeader > Heading1TextColor : Color

2-StartMenu > Menu,s > Aero > PlaceList : ListView > GroupHeaderLine

3-StartMenu > Panels > Aero > Top > JumplistUser

4-StartMenu > Panels > Basic > JumplistUser > TextColor : Color and Hottracking : Color

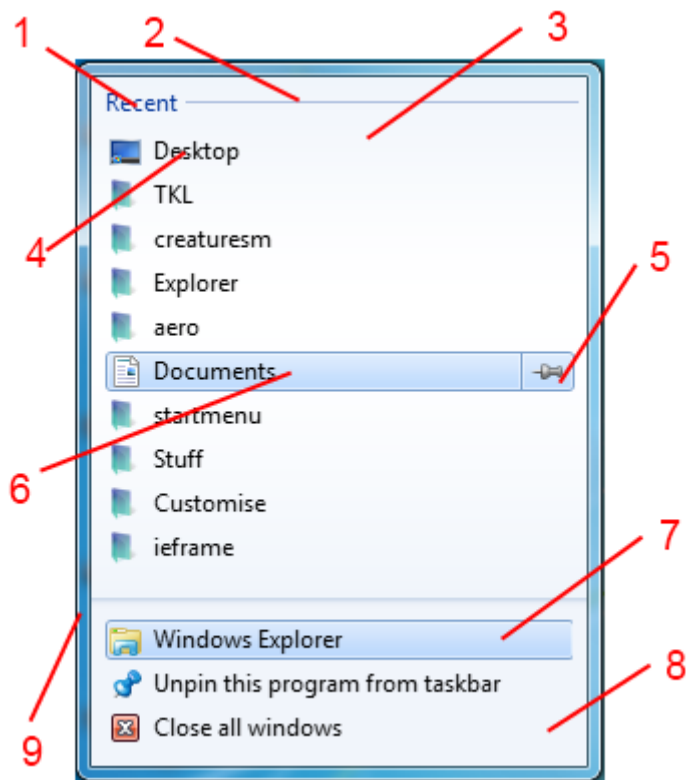
5-StartMenu > Panels > Basic > JumplistitemSplitButtonRight

6-StartMenu > Panels > Basic > JumplistitemSplitButtonLeft

7-StartMenu > Panels > Basic > Jumplistitem

8-StartMenu > Panels > Aero > Top > JumplistSystem

9-Windows & Caption Buttons > Aero > DWM Window > Frames > Normal > Bottom , Left , Right and Top



[Re: Complete Guide to Theme Building](#)

door [Dave Senior](#) » jul 6th, 2010, 12:35 pm

Standard Task Bar locations-

1-Start Orb is a Bitmap in Explorer . exe - See here - [viewtopic.php?f=24&t=40](#)

2-Taskbar & SystemTray > Taskbar > Aero > Taskbar > <1> and <3> (for left and right)

3-Taskbar & SystemTray > Taskband > Basic > Taskband > GroupImage and GroupImageHot

4-Taskbar & SystemTray > Taskband > Basic > Taskband > TaskItemButton

5-Taskbar & SystemTray > Taskband > Aero > Taskband (smallicons) > Background bottom and Background top

Taskbar & SystemTray > Taskband > Aero > Taskband > Background bottom and Background top

6-Taskbar & System Tray > System Tray > Basic > Horizontal > Button

7-Taskbar & System Tray > System Tray > Basic > Toolbar > Button

8-Taskbar & System Tray > System Tray > Basic > Clock

Taskbar & System Tray > System Tray > Basic > Clock > TextColor : Color

9-Taskbar & SystemTray > Taskbar > Basic > Show DeskTop Button



Re: Complete Guide to Theme Building

door [Dave Senior](#) » jul 6th, 2010, 2:01 pm

Save as Window-

1-Fonts , Colors & System Metrics > Fonts & System Metrics > BtnFace : Color

2-Buttons , Boxes & Controls > Boxes > ComboBox > Border

3-Fonts , Colors & System Metrics > Fonts & System Metrics > Window :Color

Buttons , Boxes, & Controls > Boxes > Edit > Basic > Background -edit this image

4-Buttons , Boxes & Controls > Boxes > ComboBox > DropDownButtonRight

Buttons , Boxes & Controls > Boxes > ComboBox > DropDownButtonRight- (Select Glyph Image DPI 96 in WSB preview window for the arrow)

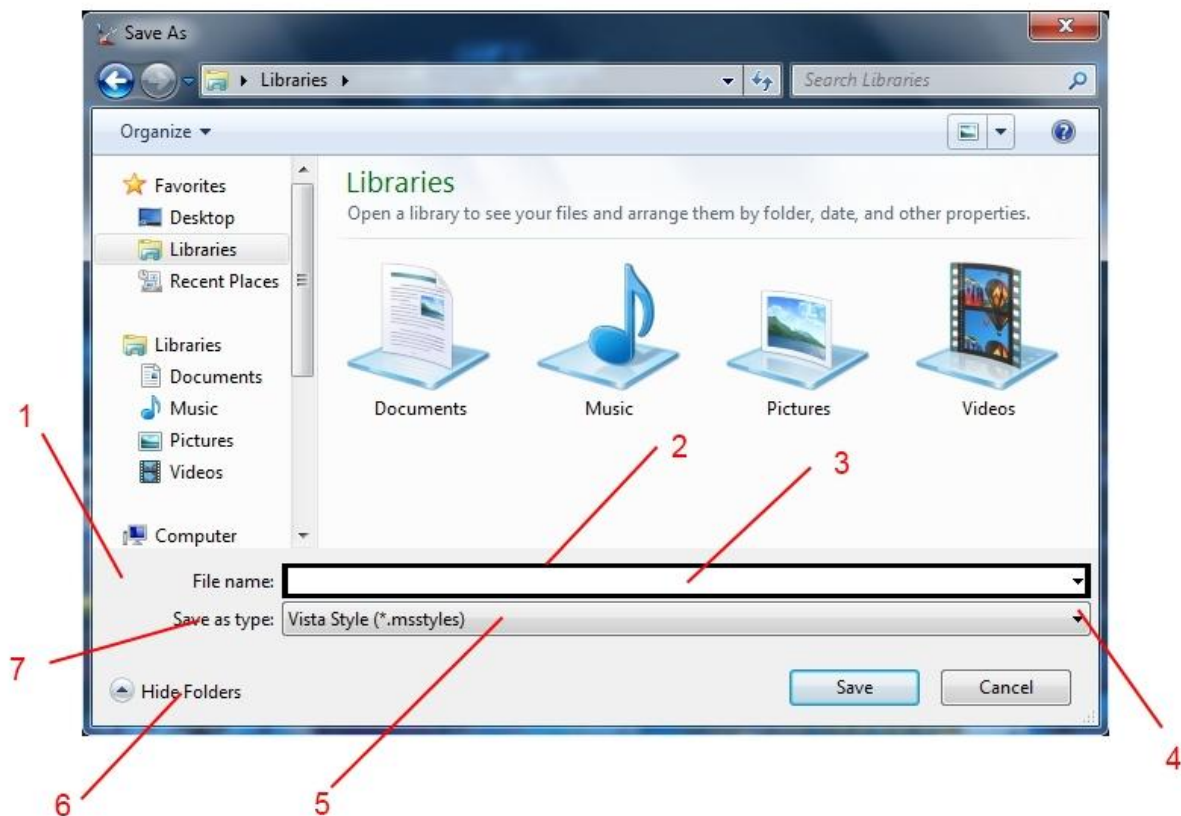
5-Buttons , Boxes & Controls > Boxes > ComboBox > ReadOnly

6-Toolbars, Headers & Rebar > Toolbars & Headers > Toolbar > TextColor

7-Fonts , Colors & System Metrics > Fonts & System Metrics > WindowText :Color

The combobox dropdown menu border can be found here-

Buttons , Boxes & Controls > Boxes > ListBox > Border(NoScroll)

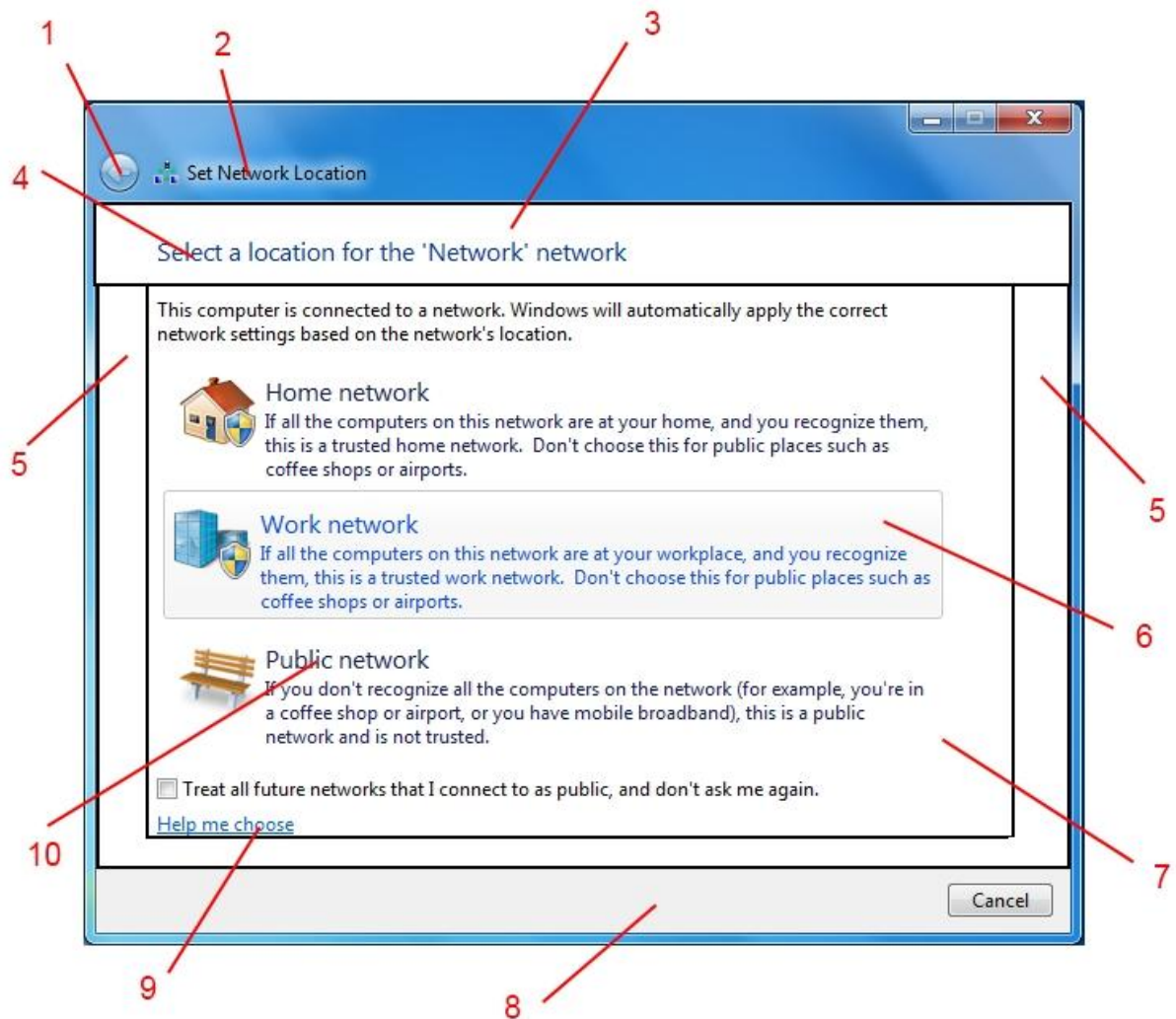


[Re: Complete Guide to Theme Building](#)

door [Dave Senior](#) » jul 6th, 2010, 8:26 pm

Set NetWork Location-

- 1-Buttons , Boxes & Controls > Buttons > Navigation > BackButton and Forward Button
- 2-Fonts , Colors & System Metrics > Fonts & System Metrics > WindowText : Color
- 3-Explorer & Shell > Shell > AeroWizard > HeaderArea > FillColor : Color
- 4-Styles > AeroWizard > HeaderArea > TextColor : Color
- 5-Explorer & Shell > Shell > AeroWizard > ContentArea > FillColor : Color
- 6-Buttons , Boxes & Controls > Buttons > CommandLink
- 7-Lists , Menus & Tabs > Tab > AeroWizardBody > FillColor : Color
- 8-Explorer & Shell > Shell > AeroWizard > CommandArea
- 9-Fonts , Colors & System Metrics > Fonts & System Metrics > HotTracking : Color
- 10-Buttons , Boxes & Controls > Buttons > CommandLink > <1> to <6> > TextColor : Color



Re: Complete Guide to Theme Building

door [Dave Senior](#) » jul 7th, 2010, 2:06 pm

System Tray Customise Window-

1-Styles > FlyOutStyle > <4> and <4> > <2> >TextColor : Color

2-TaskBar & System Tray > System Tray > Basic > System Tray Icons Panel Flyout > <7>

3-TaskBar & System Tray > System Tray > Basic > System Tray Icons Panel Flyout > <6> - FillColor : Color

System Tray Action Center Window-

4-TaskBar & System Tray > System Tray > Basic > Tray Notify Flyout > Header > FillColor : Color
(Mouse Over) ---Explorer & Shell > Explorer > listview > listitem > hot

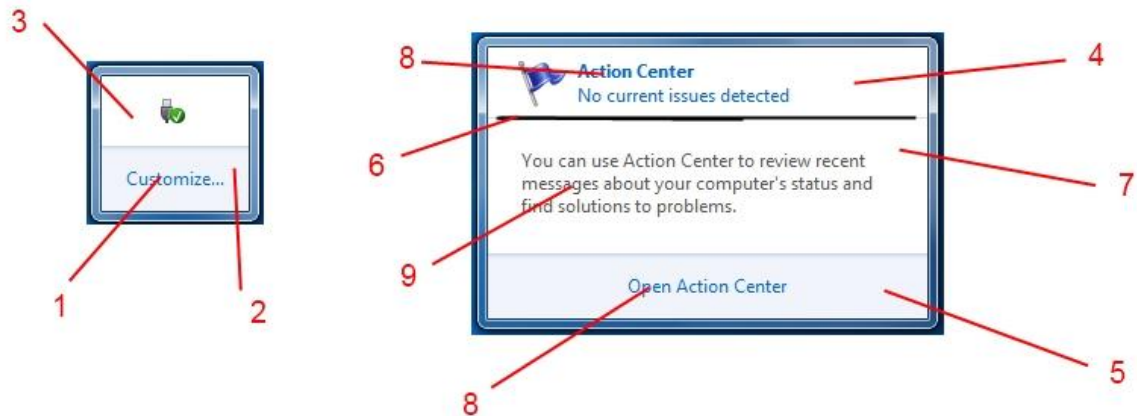
5-TaskBar & System Tray > System Tray > Basic > Tray Notify Flyout > Footer

6-TaskBar & System Tray > System Tray > Basic > System Tray Icons Panel Flyout > <5>

7-TaskBar & System Tray > System Tray > Basic > System Tray Icons Panel Flyout > <6> - FillColor : Color

8-Styles > FlyOutStyle > <4> and <4> > <2> > TextColor : Color

9-Styles > FlyOutStyle > <2> > TextColor : Color



System Tray Network Popup Window-

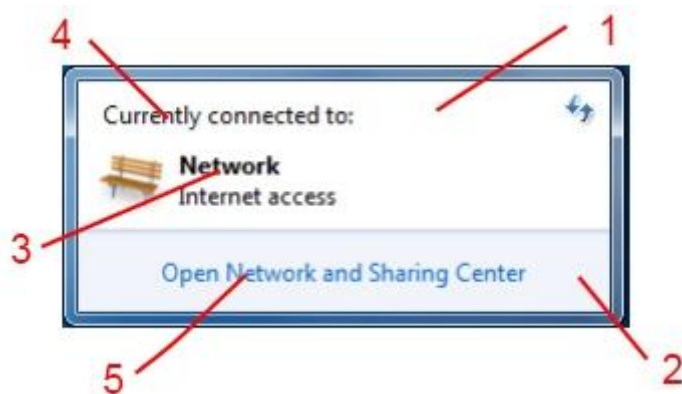
1-Fonts ,Colors & System metrics > Fonts & System metrics > Window:color

2-TaskBar & System Tray > System Tray > Basic > Tray Notify Flyout > Footer

3-Styles > FlyOutStyle > <2> > <2> > TextColor : Color

4-Styles > FlyOutStyle > <3> > TextColor : Color

5-Styles > FlyOutStyle > <4> > TextColor : Color



[Re: Complete Guide to Theme Building](#)

door [Dave Senior](#) » jul 7th, 2010, 2:11 pm

System Tray Volume Popup-

1-TaskBar & System Tray > System Tray > Basic > Tray Notify Flyout > Header > FillColor : Color

2-Styles > Button Style > GroupBox > BorderColorHint:Color

3-TaskBar & System Tray > System Tray > Basic > Tray Notify Flyout > Footer

4-Styles > FlyOutStyle > <4> and <4> > <2> > TextColor : Color

5-Buttons , Boxes & Controls > Scrollbars & Trackers > Trackbar > ThumbRight

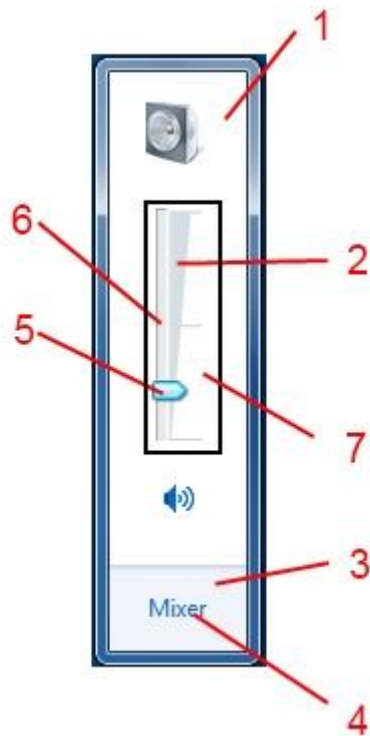
6-Buttons , Boxes & Controls > Scrollbars & Trackers > Trackbar > TrackVertical

7-Fonts , colors & System Metrics > Fonts & System Metrics > Window : Color

For the upper part of the animation(normaly a grey color) of Volume popup-

Fonts , Colors & System metrics > Fonts & System metrics > BTNSHADOW : COLOR

This post also covers most of this if you have any problems-



[Re: Complete Guide to Theme Building](#)

door [Dave Senior](#) » jul 7th, 2010, 2:16 pm

System Tray Calender Popup---

1-TaskBar & System Tray > System Tray > Basic > System Tray Icons Panel Flyout > <6> - FillColor : Color

2-Explorer and Shell > Shell > Monthcal > <1>

3-Explorer and Shell > Shell > Monthcal > <4>

4-Explorer and Shell > Shell > Monthcal > <3>

5-TaskBar & System Tray > System Tray > Basic > Tray Notify Flyout > Footer

6-Styles > FlyOutStyle > <4> and <4> > <2> > TextColor : Color

7-Explorer and Shell > Shell > Monthcal > <5> > <1> to <5> (for the hovers)

8-Styles > Flyoutstyle > <2> > TextColor : Color (Additional clock and day text)

9-Fonts ,Colors & System metrics > Fonts & System metrics > Window:color and WindowText : Color

10-The clock and background are .png images in Timedate.cpl in the System32 folder

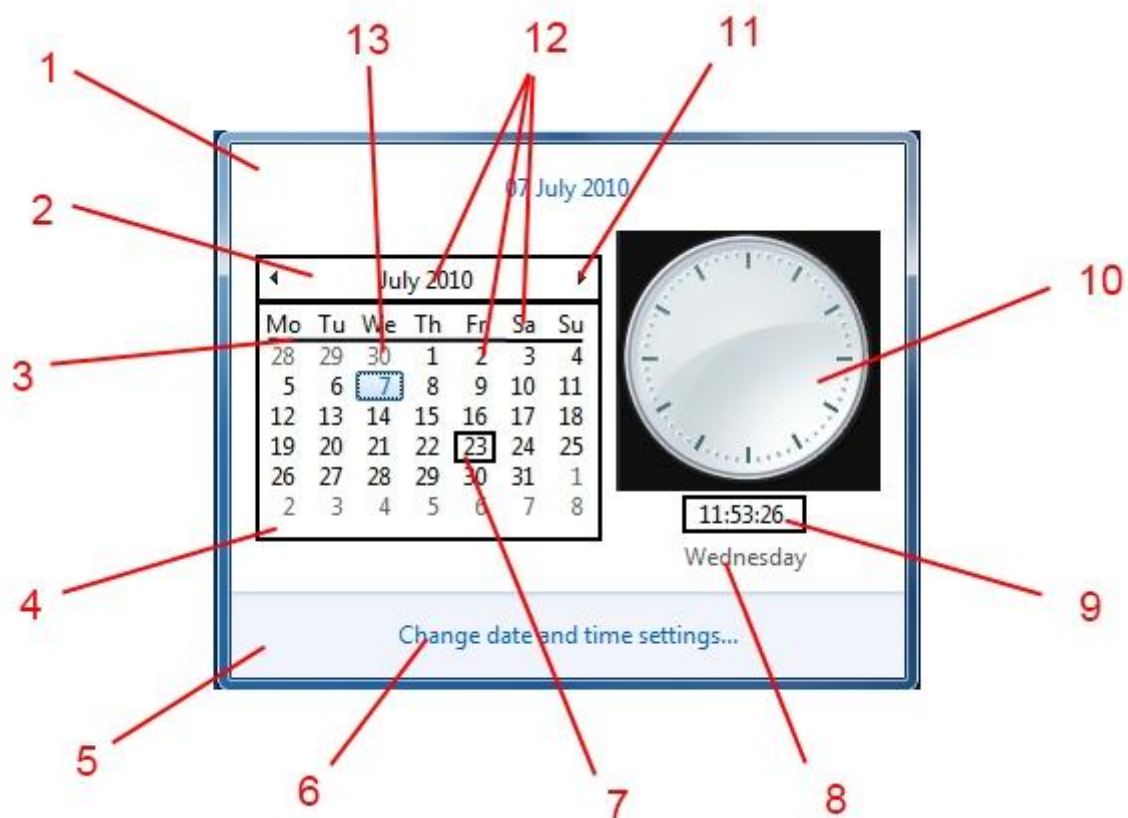
11-Explorer and Shell > Shell > Monthcal > <9> > <10> and <11> (For the arrows)

12-Explorer and Shell > Shell > Monthcal > <6> > TextColor : Color

Explorer and Shell > Shell > Monthcal > <6> > <1> to <4> TextColor : Color (for hovered, selected etc.)

13-Explorer and Shell > Shell > Monthcal > <8> > TextColor : Color

Explorer and Shell > Shell > Monthcal > <8> > <1> to <4> TextColor : Color (for hovered, selected etc.)



1-Taskbar & System Tray > Taskband > Aero > TaskbandExtendedUI > Horizontal > Thumbnails & Controls > BackgroundShadow

2-Taskbar & System Tray > Taskband > Aero > TaskbandExtendedUI > Horizontal > Thumbnails & Controls > Background

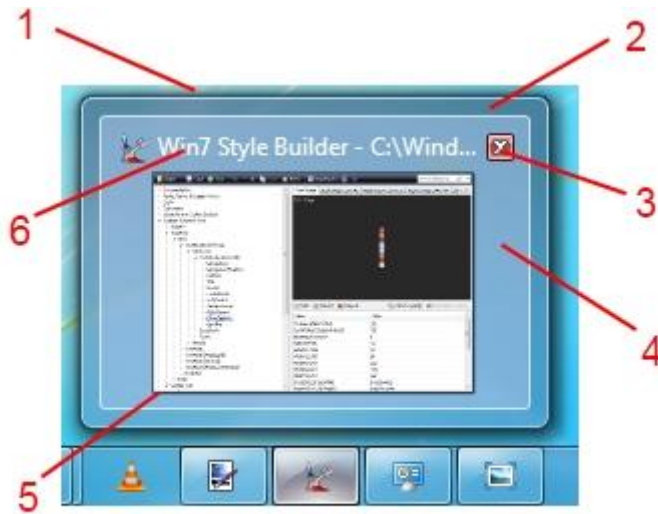
3-Taskbar & System Tray > Taskband > Aero > TaskbandExtendedUI > Horizontal > Thumbnails & Controls > CloseCaption - (GlyphImage DPI 96 for the cross)

4- Taskbar & System Tray > Taskband > Aero > TaskbandExtendedUI > Horizontal > Thumbnails & Controls > List Item

5-Taskbar & System Tray > Taskband > Aero > TaskbandExtendedUI > Horizontal > Thumbnails &

Controls > Border

6-Taskbar & System Tray > Taskband > Aero > TaskbandExtendedUI > Horizontal > Thumbnails & Controls > Title > TextColor : Colo



Re: Complete Guide to Theme Building

door [Dave Senior](#) » jul 8th, 2010, 1:53 pm

A Browse Window (This was Mouse Pointers - Browse, but most of the locations should be the same for other browse windows)

1-Fonts , Colors & System Metrics > Fonts & System Metrics > BTNTEXT : COLOR

2-Buttons , Boxes & Controls > Boxes > ComboBox > Border

3-Fonts , Colors & System Metrics > Fonts & System Metrics > Window : Color

4-Buttons , Boxes & Controls > Boxes > ComboBox > DropDownButtonRight

Buttons , Boxes & Controls > Boxes > ComboBox > DropDownButtonRight- (Select Glyph Image DPI 96 in WSB preview window for the arrow)

5-ToolBars < Headers & Rebar > Toolbars & Headers > Toolbar > Button

6-ToolBars < Headers & Rebar > Toolbars & Headers > Toolbar > DropDownButton

ToolBars < Headers & Rebar > Toolbars & Headers > Toolbar > <7> (For the Arrow)

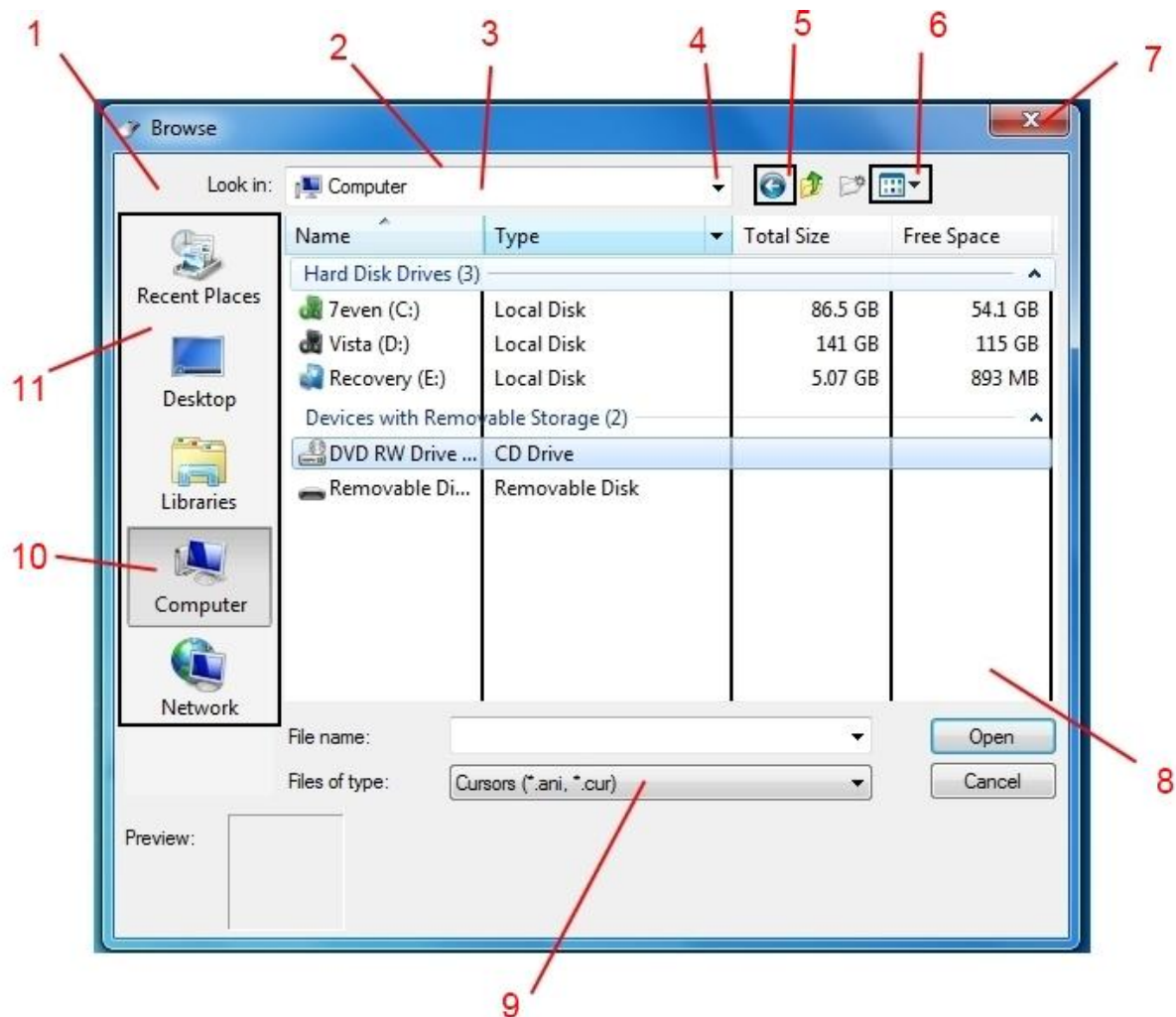
7-Windows & Caption Buttons > Aero > DWM Window > CloseButton > LoneButton .(Active and inactive)

8-Fonts , Colors & System Metrics > Fonts & System Metrics > Window : Color

9-Buttons , Boxes & Controls > Boxes > ComboBox > ReadOnly

10-Explorer & Shell > Explorer > PlacesBar > Button

11-Explorer & Shell > Explorer > PlacesBar



[Re: Complete Guide to Theme Building](#)

door [Dave Senior](#) » jul 8th, 2010, 1:59 pm

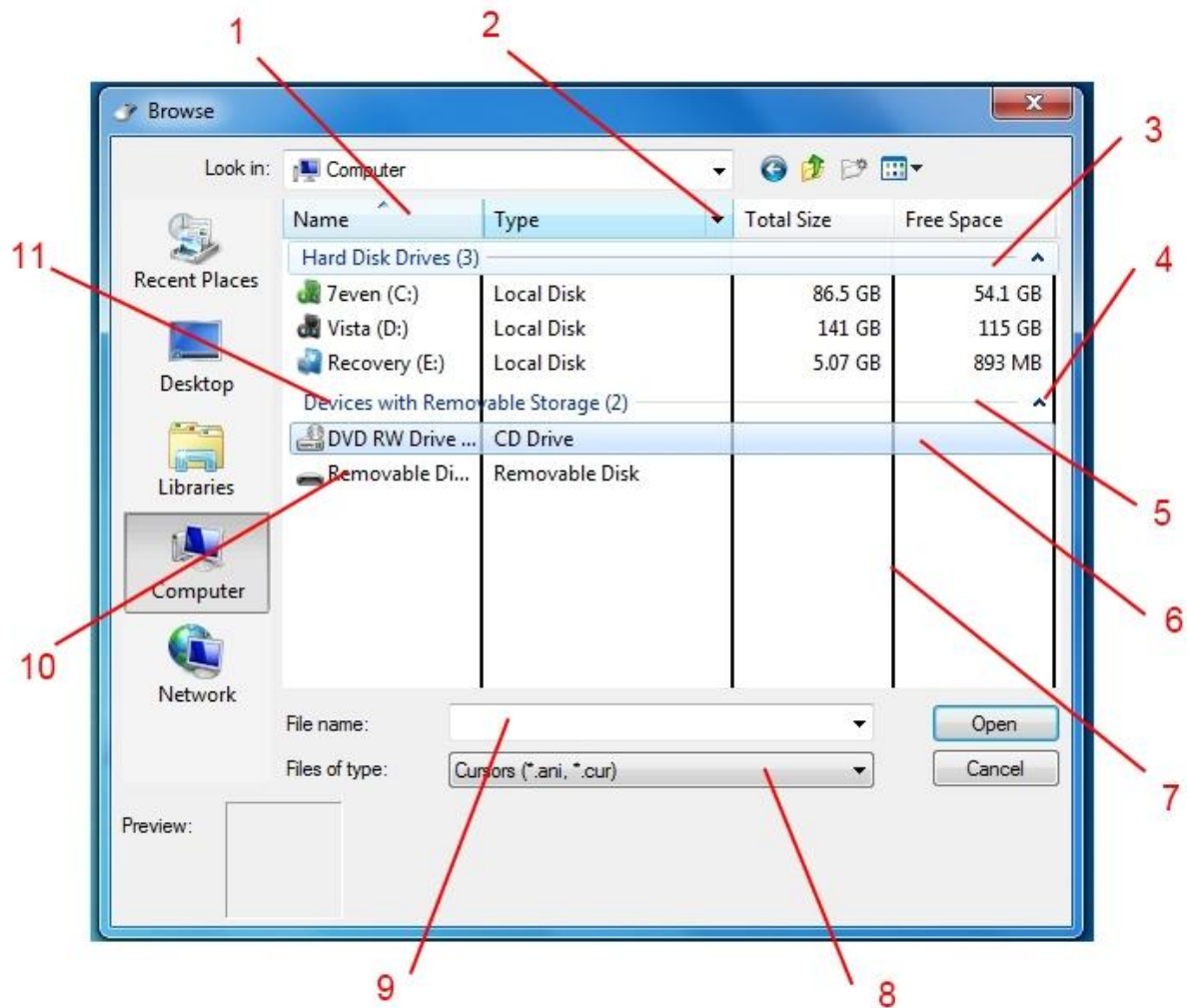
A Browse Window - 2 (This was Mouse Pointers - Browse, but most of the locations should be the same for other browse windows)

- 1-ToolBars > Headers & Rebar > Toolbars & Headers > Header > HeaderItem
- ToolBars > Headers & Rebar > Toolbars & Headers > Header > HeaderSortArrow
- 2-ToolBars > Headers & Rebar > Toolbars & Headers > Header > HeaderDropDown
(Glyph Image DPI 96 for the Arrow)
- 3-Lists , Menu,s & Tabs > ListView > GroupHeader > <2> to <16>
- 4-Lists , Menu,s & Tabs > ListView > ExpandButton and CollapseButton
- 5-Lists , Menu,s & Tabs > ListView > GroupHeaderLine
- 6-Explorer & Shell > Explorer > ListView > ListItem > Hot to HotSelected
- 7-Lists , Menu,s & Tabs > ListView > ColumnDetail
- 8-Buttons , Boxes & Controls > Boxes > ComboBox > ReadOnly
- 9-Fonts , Colors & System Metrics > Fonts & System Metrics > Window :Color
- Buttons , Boxes, & Controls > Boxes > Edit > Basic > Background

Buttons , Boxes & Controls > Boxes > ComboBox > Border

10-Fonts , Colors & System Metrics > Fonts & System Metrics > WindowText : Color

11-Lists , Menu,s & Tabs > ListView > GroupHeader > HEADING1TEXTCOLOR : COLOR



[Re: Complete Guide to Theme Building](#)

door [Dave Senior](#) » jul 9th, 2010, 3:18 pm

Balloon (Safely Remove HardWare etc)-

1-Styles > TooltipStyle > Balloon > TextColor:Color

2-Styles > TooltipStyle > BalloonTitle > TextColor:Color

3-Explorer & Shell > Explorer > ToolTip > Balloon

4-Explorer & Shell > Explorer > ToolTip > Close

5-Explorer & Shell > Explorer > ToolTip > BalloonStem

6-Explorer & Shell > Explorer > ToolTip > <7>

ToolTip-

7-Styles > TooltipStyle > Standard > TextColor : Color

8-Explorer & Shell > Explorer > ToolTip > Standard

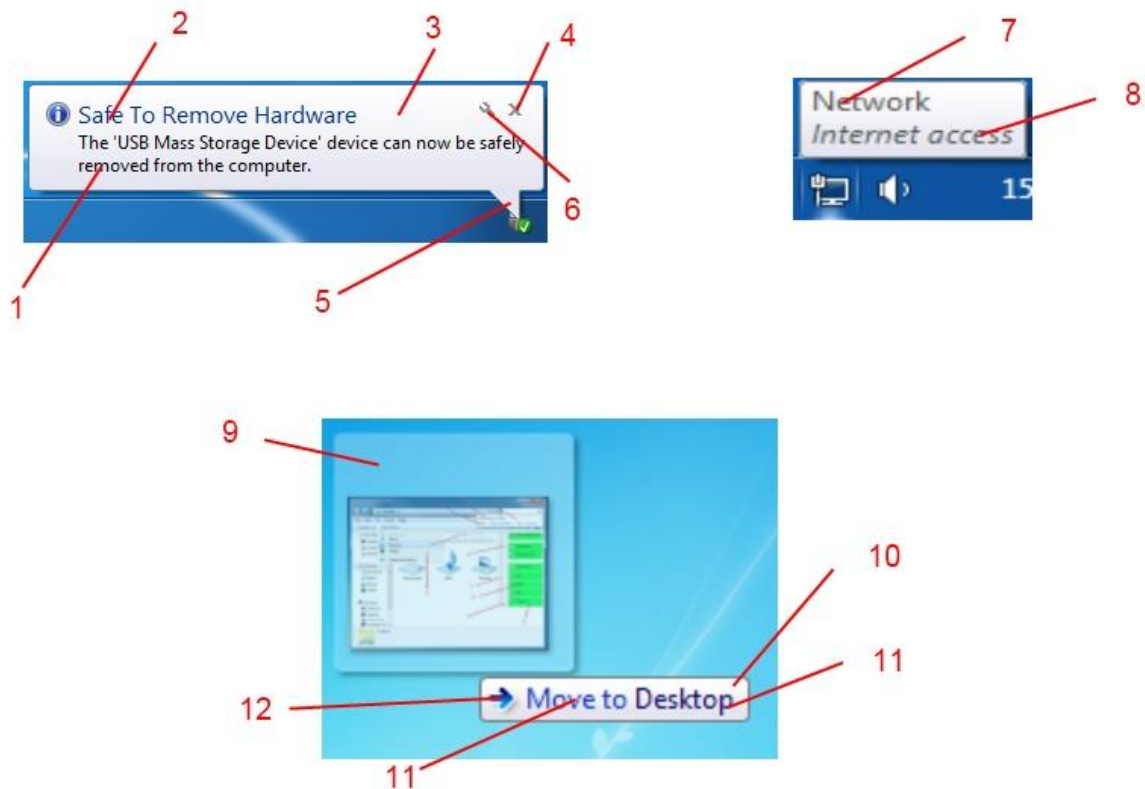
Drag and Drop-

9-Explorer & Shell > Shell > DragDrop > ImageBackGround

10-Explorer & Shell > Explorer > ToolTip > Standard

11 and 12- Explorer & Shell > Shell > DragDrop > "Copy" down to "None"

You can change the images and TextColor : Color for the various states of Drag and Drop,open these parts up to change the right hand side TextColor.



[Re: Complete Guide to Theme Building](#)

door [Dave Senior](#) » jul 11th, 2010, 3:18 pm

Right Click DeskTop Menu-

1-Lists, menu,s & tabs > menu > popupitem

2-Lists, menu,s & tabs > menu > popupitem > TextColor :Color

3-Lists, menu,s & tabs > menu > popupcheck

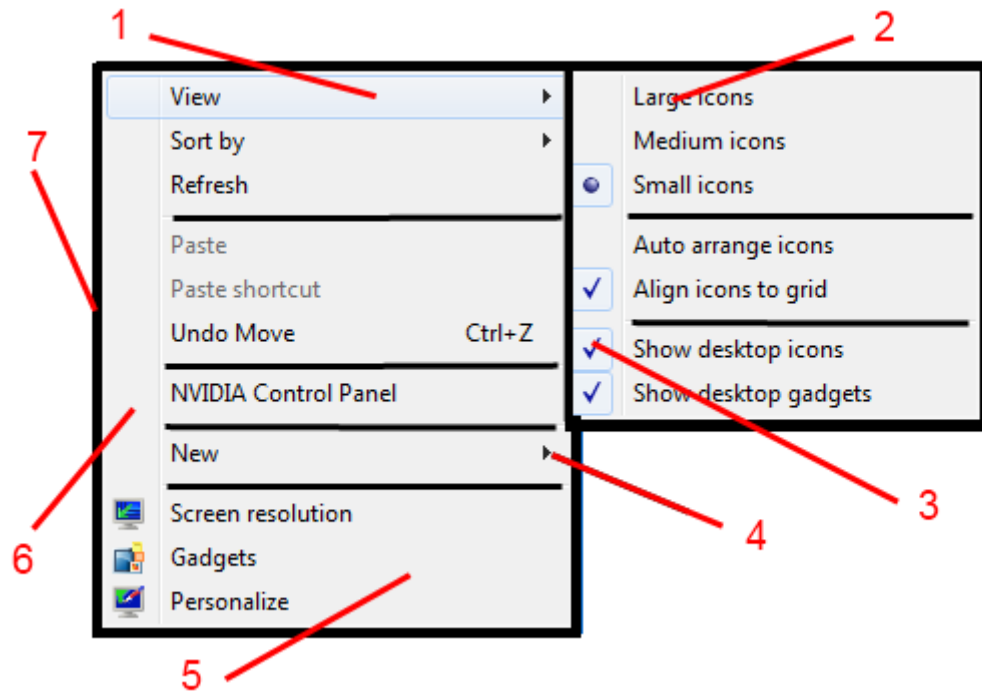
Lists, menu,s & tabs > menu > popupcheckbackground

4-Lists, menu,s & tabs > menu > popups submenu

5-Lists, menu,s & tabs > menu > popupbackground

6-Lists, menu,s & tabs > menu > popupgutter

7-Lists, menu,s & tabs > menu > popupborders



WSB Use Visual Style /Replace Image/Save Window-

See the post on the Copy Window to change the buttons in this one,these popups are very similar.

1-Explorer & Shell > Shell > Task Dialog > Primary Panel > FillColor : Color

2-Explorer & Shell > Shell > Task Dialog > SecondaryPanel

3--Explorer & Shell > Shell > Task Dialog > FootNoteSeparator

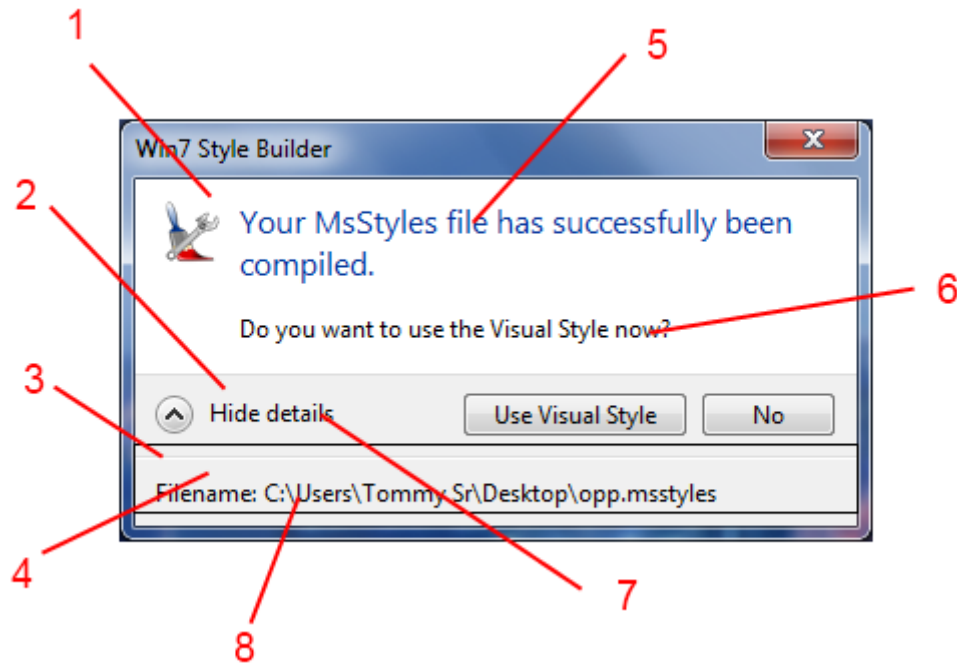
4-Explorer & Shell > Shell > Task Dialog > FootNotePane > FillColor : Color

5-Styles > TaskDialogStyle > MainInstructionPane > TextColor : Color

6-Styles > TaskDialogStyle > ContentPane > TextColor : Color

7-Styles > TaskDialogStyle > ExpandoText > TextColor : Color

8-Styles > TaskDialogStyle > ExpandedFooterArea > TextColor : Color



[Re: Complete Guide to Theme Building](#)

door [Dave Senior](#) » jul 11th, 2010, 4:49 pm

Explorer Frames , Shadows ,Reflections , Buttons , Button and Text Glows-

1-Windows & Caption Buttons > Aero > DWM Window > Shadow > Normal > Bottom , Left , Right and Top

(The Shadow surrounding the window frames)

2-Windows & Caption Buttons > Aero > DWM Window > Frames > Normal > Bottom , Left , Right and Top

(Fonts , colors & System Metrics > Fonts & System Metrics > PaddedBorderWidth : Size - To change the size of the Window Frame borders)

3-Windows & Caption Buttons > Aero > DWM Window > Reflections > Main, OverLay TopLeft and Overlay Sides

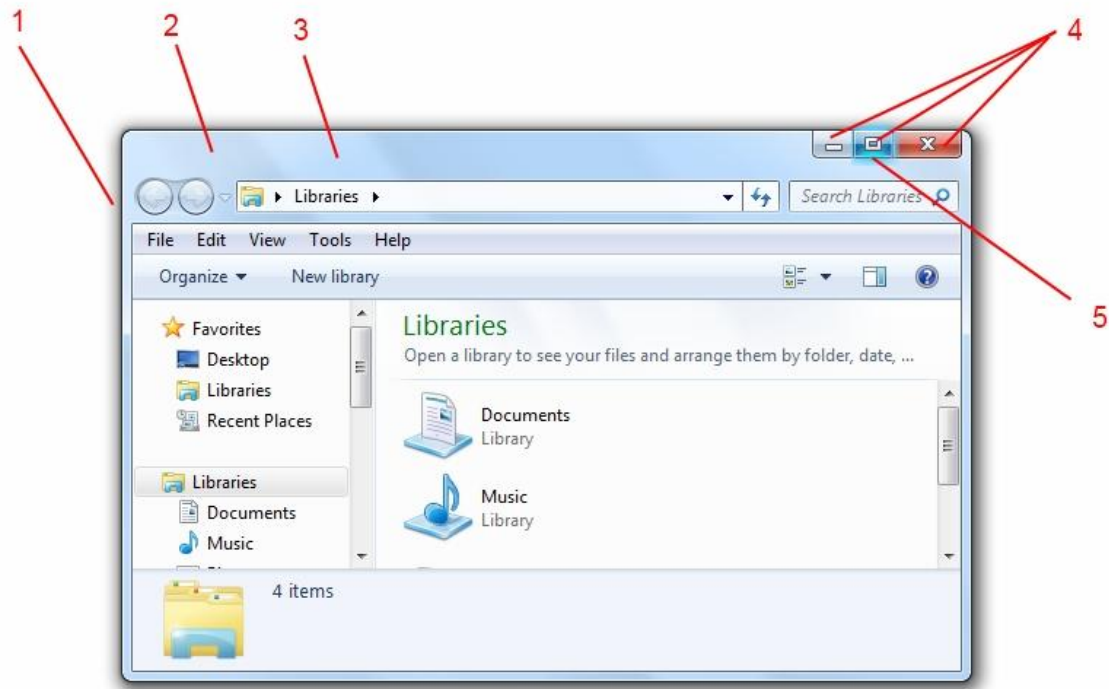
(This is the faint stripey image and white sides you see in the Window Frames and Taskbar)

4-Windows & Caption Buttons > Aero > DWM Window > Restore /Maximize Button , Minimize/Help Button and Close Button

(All the CaptionButtons can be found in these areas)

5--Windows & Caption Buttons > Aero > DWM Window > Glows

(The glows for the Caption Buttons, TEXT is for the Caption Text)



[Re: Complete Guide to Theme Building](#)

door [Dave Senior](#) » jul 14th, 2010, 12:18 am

Firefox-

1-Fonts , colors & System Metrics > Fonts & System Metrics > CaptionText : Color
 Windows and Caption Buttons > Aero > Dwm Window > Frames > Normal > Top > MaxActive and
 inactive > textcolor : color
 Windows & Caption Buttons > Aero > DWM Window > Glows > Text

2-Fonts , colors & System Metrics > Fonts & System Metrics > MenuText : Color
 Lists, menu,s & tabs > menu > popupitem > Hot > TextColor :Color
 Toolbars, Headers & Rebar > Toolbars & Headers > ToolBar >> Button (Hover
 Button)Lists, Menus & Tabs > Menu > BarItem (Hover Button)
 For the inactive window textcolor- Fonts , Colors & System Metrics > Fonts & System Metrics >
 BtnShadow : Color (Due to the ammount of areas this property effects there,s not alot you can do
 with it)

3-Buttons , Boxes & Controls > Boxes > Edit > Basic > EditBorder(NoScroll)
 (Depending on how your image is edited this can some times be-
 Fonts , colors & System Metrics > Fonts & System Metrics > Window : Color)

4-Toolbars, Headers & Rebar > Rebar > Rebar

5-Fonts , colors & System Metrics > Colors > EdgeHighLightColor : Color

-Fonts , colors & System Metrics > Colors > EdgeShadowColor : Color

6-Toolbars, Headers & Rebar > Rebar > browserTabBar

7--Fonts , colors & System Metrics > Fonts & System Metrics > btnface : Color (Active Tab)

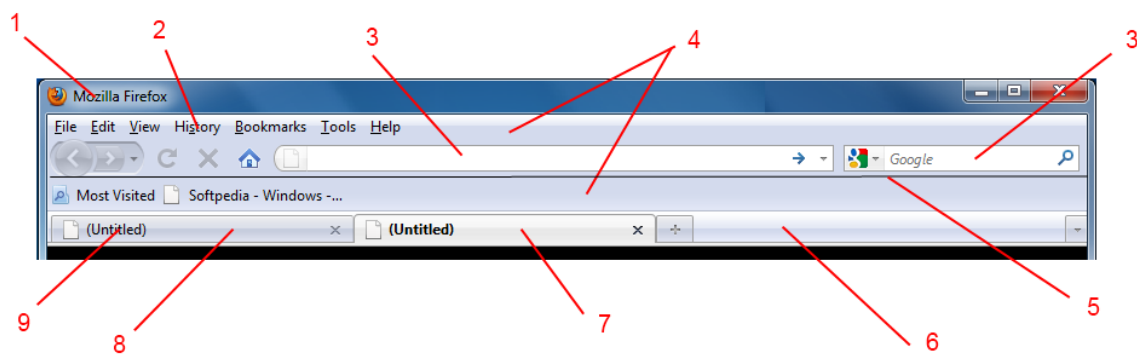
8-The color for inactive Tab comes from -

Toolbars, Headers & Rebar > Rebar > browserTabBar

9-Fonts , colors & System Metrics > Fonts & System Metrics > WindowText : Color

The page load and download progress bar color can be found here -

Buttons , Boxes & Controls > Progress bars > Normal > Chunk



[Re: Complete Guide to Theme Building](#)

door [Dave Senior](#) » jul 14th, 2010, 7:51 pm

Internet Explorer 1---

1-Address, Breadcrumbs & Search > Address > Address Band > Basic > Address Band > <1>

2-Address, Breadcrumb & Search > Address > Go Toolbar > Basic > Normal > Active > Button

Address, Breadcrumb & Search > Address > Go Toolbar > Basic > Normal > InActive > Button

3-Address, Breadcrumbs & Search > Search > SearchBox > Basic > Normal > Active > <1>

4-Address, Breadcrumbs & Search > Search > Button ToolBar > Basic > SplitButton(left)

5-Address, Breadcrumbs & Search > Search > Button ToolBar > Aero > SplitButtonDropdown(right)

6-Toolbars, Headers and Rebar > Toolbars & Headers > Toolbar > DropDownButton

7-Toolbars, Headers and Rebar > Toolbars & Headers > Toolbar > SplitButton

Toolbars, Headers and Rebar > Toolbars & Headers > Toolbar > SplitButtonDropDown

(Glyph Image, DPI 96 for the arrow)

8-Toolbars, Headers and Rebar > Toolbars & Headers > Status

9-Toolbars, Headers and Rebar > Toolbars & Headers > Status > Pane

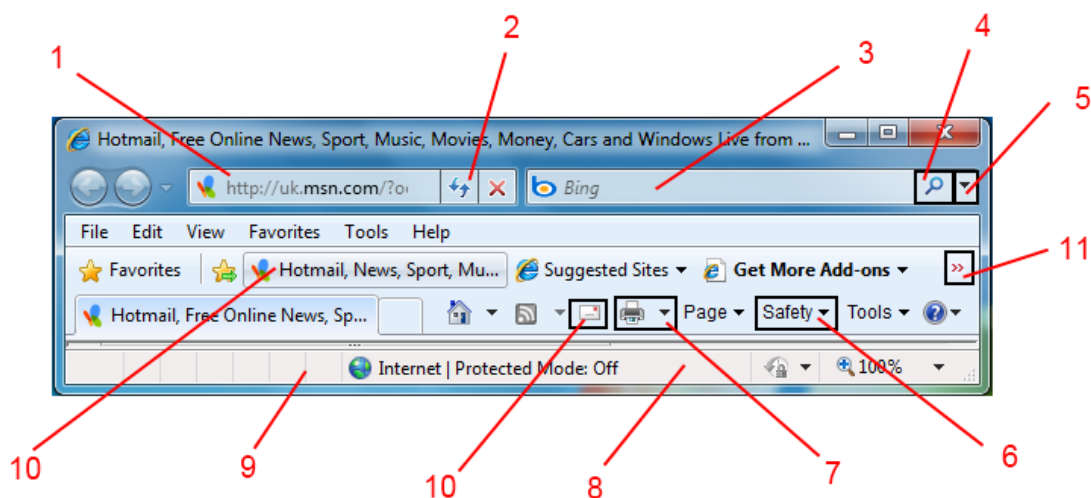
10-Toolbars, Headers and Rebar > Toolbars & Headers > Toolbar > Button

11-Toolbars, Headers and Rebar > Rebar > Rebar > Chevron

Glyph Image , DPI 96 for the arrow

Look at this post by MR GRiM to mod internet explorer toolbars

[viewtopic.php?f=6&t=2240](http://www.modding.com/viewtopic.php?f=6&t=2240)



Re: Complete Guide to Theme Building

door **Dave Senior** » jul 14th, 2010, 7:53 pm

Internet Explorer -2- TextColors--

1-Fonts , Colors & System Metrics > Fonts & System Metrics >CaptionText : Color

Windows and Caption Buttons > Aero > Dwm Window > Frames > Normal > Top > MaxActive and inactive > textcolor : color

2-Fonts , Colors & System Metrics > Fonts & System Metrics > DKShadow3D:Color

Mouse over:-

3-Address , Breadcrumb & Search > Address > Edit > Aero > Normal > Active > Textcolor : Color

Address , Breadcrumb & Search > Address > Edit > Aero > Normal > Inactive > Textcolor : Color

Address , Breadcrumb & Search > Address > Edit > Aero > Max > Active > Textcolor : Color

Address , Breadcrumb & Search > Address > Edit > Aero > Max > Inactive > Textcolor : Color

when you type and black part of default -

Fonts , Colors & System Metrics > Fonts & System Metrics > Windowtext : color

4-Fonts , Colors & System Metrics > Fonts & System Metrics > MenuText: Color

Fonts , Colors & System Metrics > Fonts & System Metrics > HighLight Text : Color

Fonts , Colors & System Metrics > Fonts & System Metrics > HighLight : Color

For the inactive window textcolor- Fonts , Colors & System Metrics > Fonts & System Metrics >

BtnShadow : Color (Due to the ammount of areas this property effects there,s not alot you can do with it)

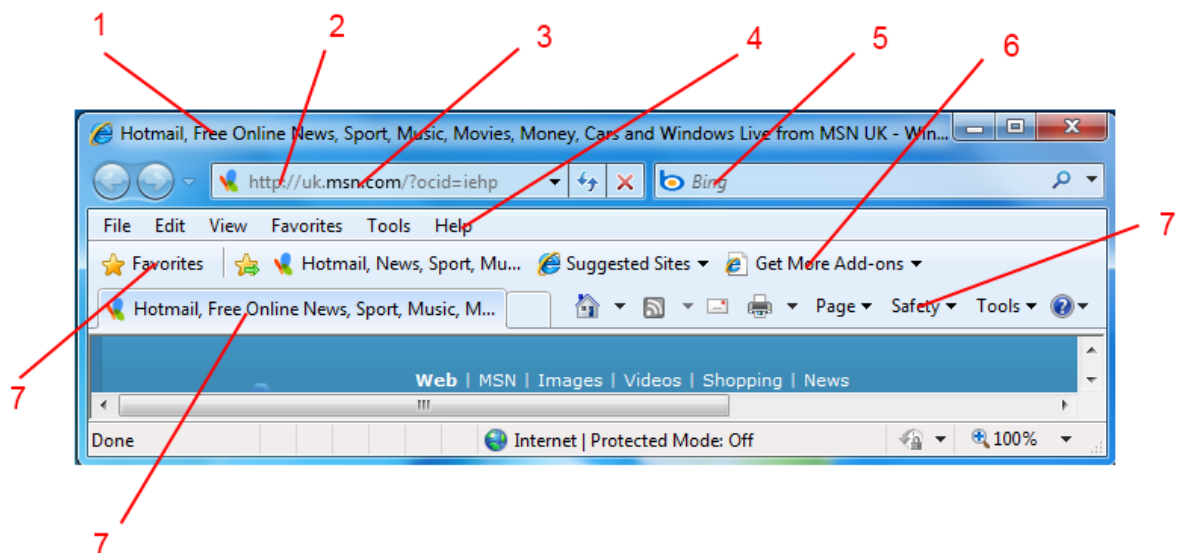
5-Vista Legacy > Address , Breadcrumb & Search > Search > Edit > Aero > Normal > Active and Inactive > TextColor : Color

Vista Legacy > Address , Breadcrumb & Search > Search > Edit > Aero > Max > Active and Inactive > TextColor : Color

6-Fonts , Colors & System Metrics > Fonts & System Metrics > BtnText : Color

7-Toolbars, Headers and Rebar > Toolbars & Headers > Toolbar > TextColor : Color

Toolbars, Headers and Rebar > Toolbars & Headers > Toolbar > Default > Hot > TextColor : Color(for the mouseover)



[Re: Complete Guide to Theme Building](#)

door [Dave Senior](#) » jul 22nd, 2010, 1:34 pm

Margins-

ContentMargins-

ContentMargins are seen throughout the .msstyle , some you can adjust some you can't,. In the ones that you can use they control the position of icons, buttons and other content.

An example of content margins moving icons to the right in a bottom position taskbar can be done by navigating to

- Taskbar & SystemTray > Taskband > Basic > Taskband > BackGroundBottom > ContentMargins : Margins-

now set the first number to 50 and test ,this should move your taskbar icons 50 pixels to the right(0=all the way to the left).

This is just a basic guide, please don't ask which content margins you can use, people find new ones from time to time . I,ve found that most of the ones in the StartMenu work but its a matter of trial and error.

SizingMargins -

SizingMargins- 7, 7, 7, 7 = Left, Right , Top , Bottom

These margins control how an image stretches (SizingType : Enum - Stretch)

If for example you have a task band image that is 200 Pixels long by 40 Pixels high the margins above mean that the "first 7 pixels in " at the left,right,top and bottom of the image will remain static,any thing inside these margins will stretch.

In the image below,the red area is a 5 pixel border, so -SizingMargins- 7, 7, 7, 7 should hold the red area in its original form and stop it distorting when the image stretches horizontally or vertically ,only the blue area in the middle will stretch.

There can be alot of trial and error involved when setting sizingmargins this is only a basic guide,some areas react differently to others when setting sizingmargins, but most of the time you have to set them if you are replacing the original theme image for a larger more detailed image.

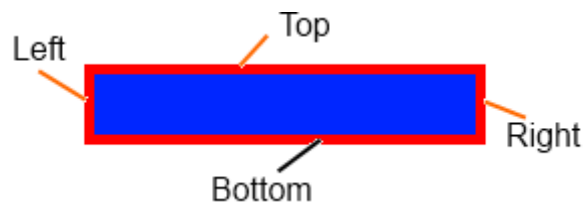
Note : Your sizingmargins should not exceed the dimensions of the image you are using, this will cause the image not to show in most cases.

If you click the where it says stretch at "SizingType : Enum - Stretch " you will get a dropdown with the options -TrueSize-Stretch or Tile .

If you choose truesize the image you use will remain its original dimensions, this method should only be used if the image doesn't need to stretch to fill an area,you should also consider that certain images are used in several areas , sometimes they may have to stretch others they may remain static.

The tile option does as its name suggests- it will tile an area with a truesize image.

The best way to learn how to use sizingmargins is to see how they have been set in a theme you like,if you have a theme and you like the way an image has been edited, compare its dimensions and sizingmargins to the standard aero theme.



[Re: Complete Guide to Theme Building](#)

door [Dave Senior](#) » jul 23rd, 2010, 6:21 pm

How to add a property -

For an example I will add a textcolor property to the Window Tabs-

1-Navigate to -Lists, Menus & Tabs > Tab (click tab)

2-Press the add property button

3-From the left dropdown under "Type" in the new property window select color

4-From the right dropdown under "Property" in the new property window select TextColor

Now press ok. The new Textcolor : Color property should now be in the vsb property window.

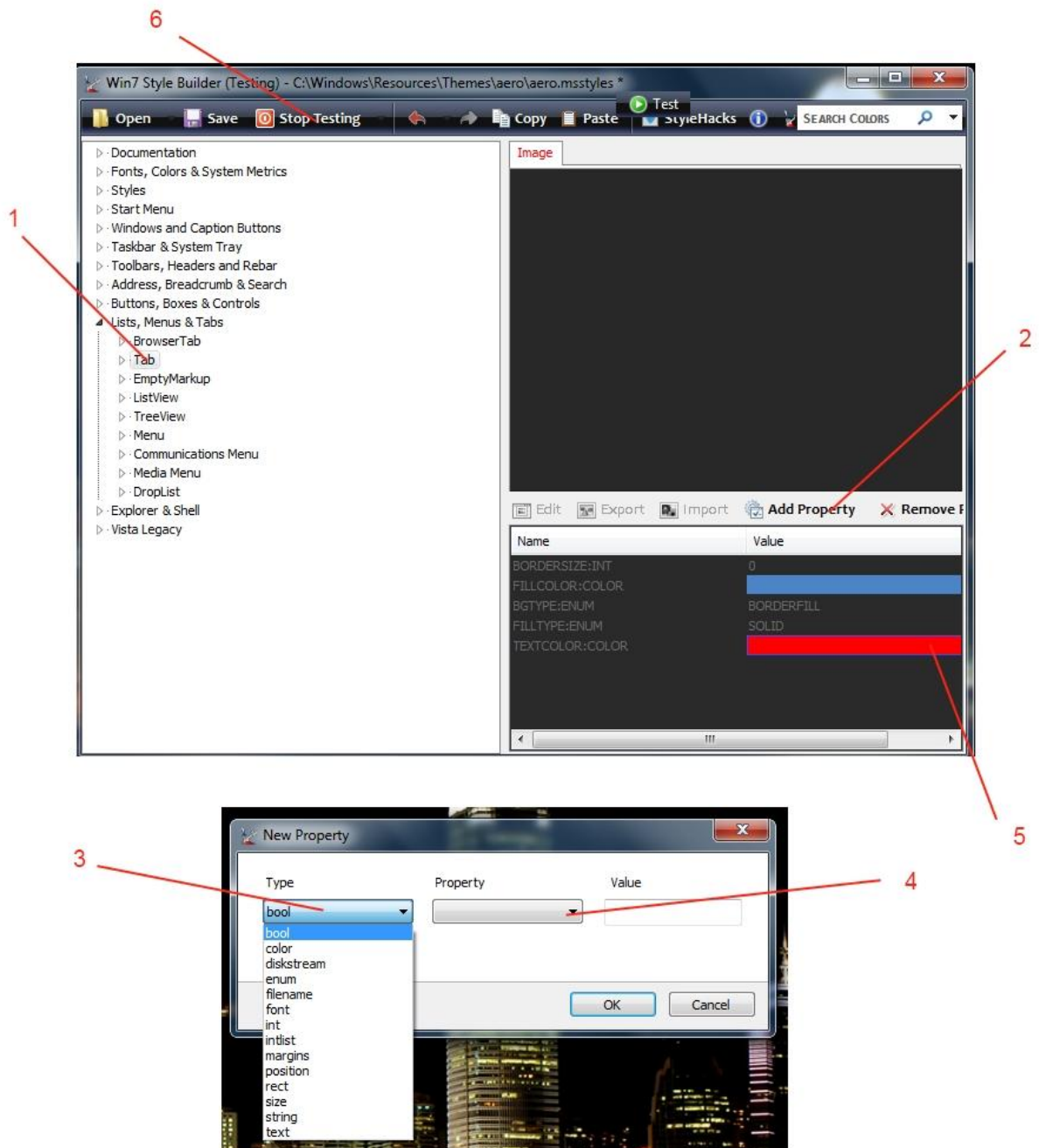
5-Pressing on the color (Default is usually Black) will bring up a color chart, choose the color for your text ,I've chosen red so it stands out on the white background , press ok.

6- Now press the test button in the vsb toolbar to see the result

Note: When testing this sort of thing, always choose a color that will stand out on the area you want to change,no point doing black on black etc.

YOU ARE NOT GUARANTEED TO GET A POSITIVE RESULT, NOT EVERY TEXTCOLOR, FONT, BACKGROUND ETC CAN BE CHANGED BY ADDING PROPERTIES

There isn,t a tutorial for which properties you can add to change things , I used Textcolor : Color because it is a handy one to know, as you will see in the dropdown list there are many others. Adding properties is what the more advanced themers have spent alot of time on .You just have to experiment, some times you get a result some you don,t.This can be quite time consuming and involves alot of testing.It just depends on how far you want to go.
Good luck with this one, let us know if you have any "good finds"



[Re: Complete Guide to Theme Building](#)

door [Dave Senior](#) » jul 30th, 2010, 6:04 pm

Desktop / Links Taskbar Toolbar Popup Menu-

1-Vista Legacy > Taskbar & Tray Notify > Taskbar > Aero > Rebar > TextColor : Color

2-Vista Legacy > Taskbar & Tray Notify > Taskbar > Basic > Rebar > Chevron (Glyph ImageDPI96 for the arrow)

3-Explorer & Shell > Explorer > Menu > Toolbar > <default>

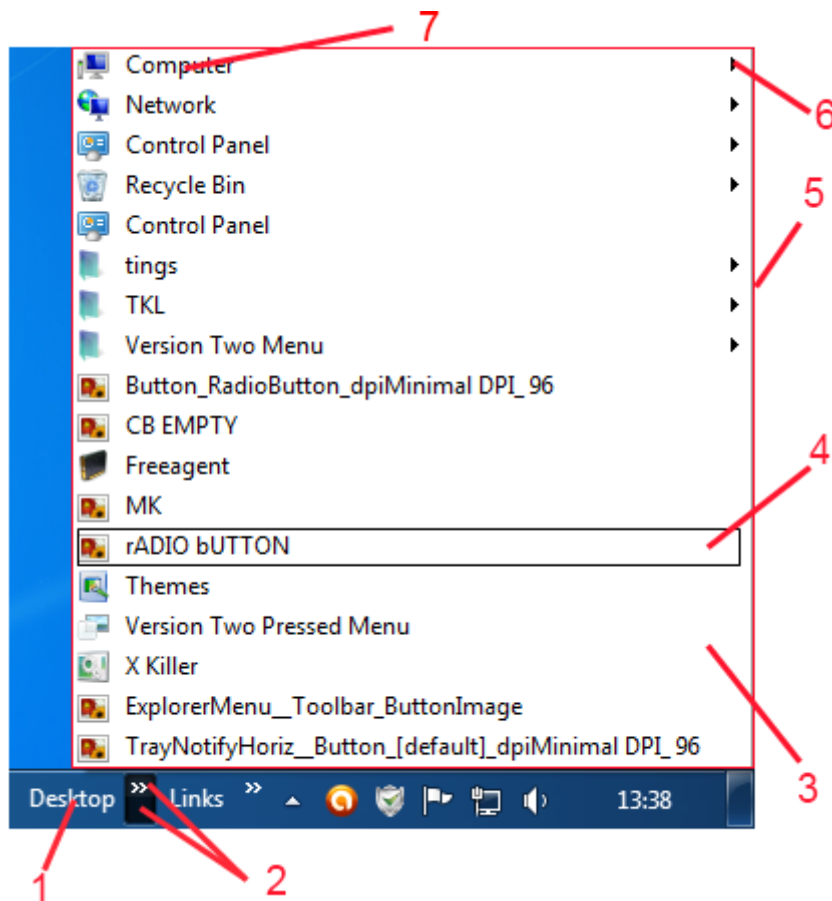
4-Explorer & Shell > Explorer > Menu > Toolbar > Button

5-Fonts, Colors & System Metrics > Fonts & System Metrics > BTNSHADOW: COLOR

6-Fonts, Colors & System Metrics > Fonts & System Metrics > MENUTEXT : COLOR

Fonts, Colors & System Metrics > Fonts & System Metrics > HighlightTEXT : COLOR

7-Explorer & Shell > Explorer > Menu > Toolbar > TextColor : Color



Re: Complete Guide to Theme Building

door [Dave Senior](#) » nov 26th, 2010, 1:12 pm

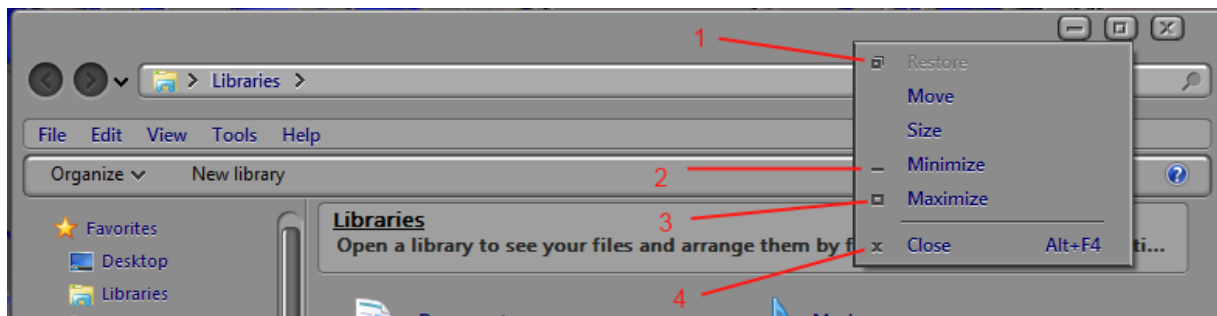
Caption Bar Context Menu-

1-Lists, Menus & Tabs > Menu > SystemRestore

2-Lists, Menus & Tabs > Menu > SystemMinimize

3-Lists, Menus & Tabs > Menu > SystemMaximize

4-Lists, Menus & Tabs > Menu > SystemClose



[Re: Complete Guide to Theme Building](#)

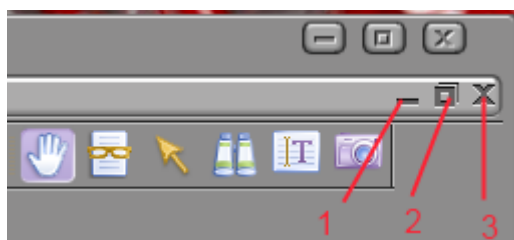
door [Dave Senior](#) » nov 26th, 2010, 1:15 pm

MDIButtons, located in basic, these show in both Aero and Basic mode-

1-Windows and Caption Buttons > Basic > MDIMinButton

2-Windows and Caption Buttons > Basic > MDIRestoreButton

3-Windows and Caption Buttons > Basic > MDICloseButton

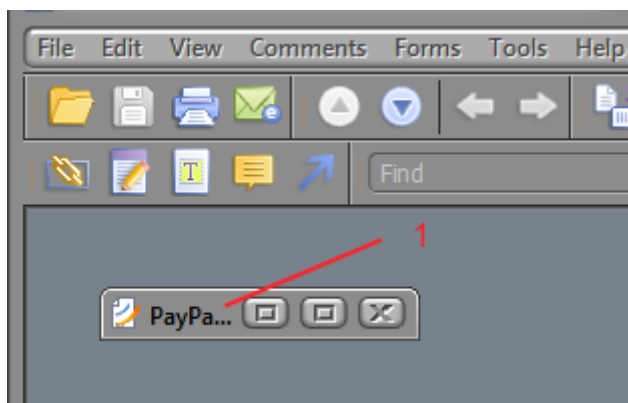


[Re: Complete Guide to Theme Building](#)

door [Dave Senior](#) » nov 26th, 2010, 1:18 pm

Min Caption BackGround, also shows in both Aero and Basic mode-

1-Windows and Caption Buttons > Basic > MinCaption

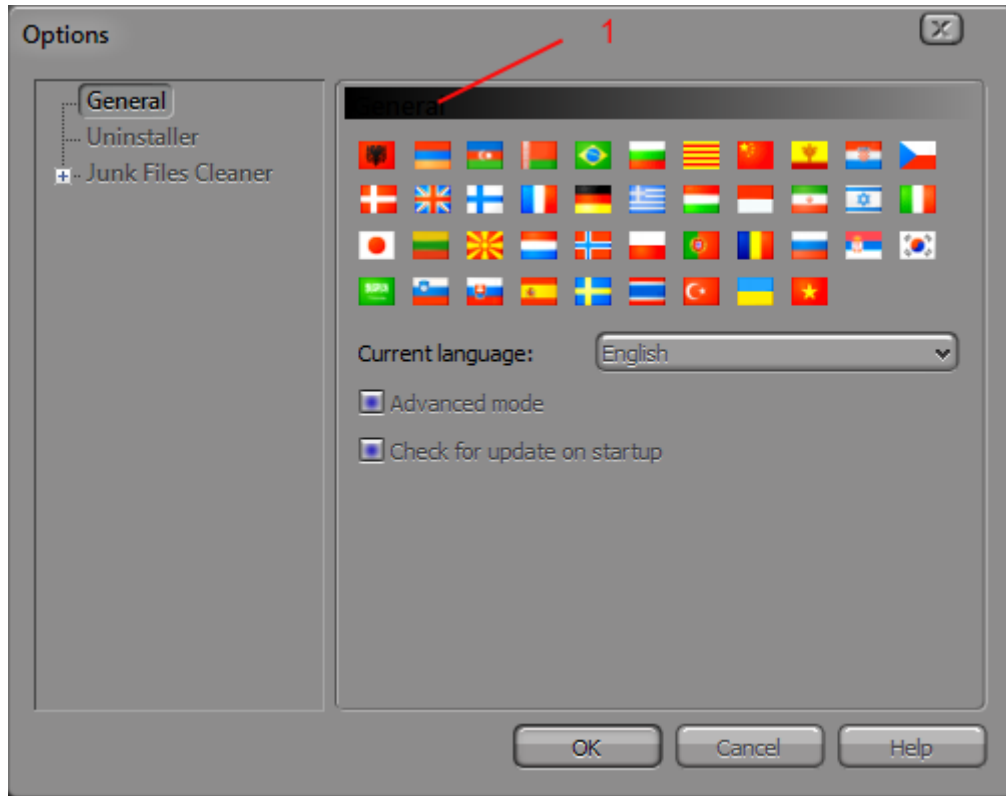


[Re: Complete Guide to Theme Building](#)

door [Dave Senior](#) » nov 26th, 2010, 1:20 pm

Inactive Caption Gradient-

1-Fonts, Colors & System Metrics > Fonts & System Metrics > inactivecaption : color



[Re: Complete Guide to Theme Building](#)

door [Dave Senior](#) » nov 26th, 2010, 1:22 pm

Nvidea Control Panel-

1-Fonts, Colors & System Metrics > Fonts & System Metrics > btnface : color

2-Toolbars, Headers and Rebar > Toolbars & Headers > Toolbar > fillcolor : color

3-Fonts, Colors & System Metrics > Fonts & System Metrics > activecaption : color

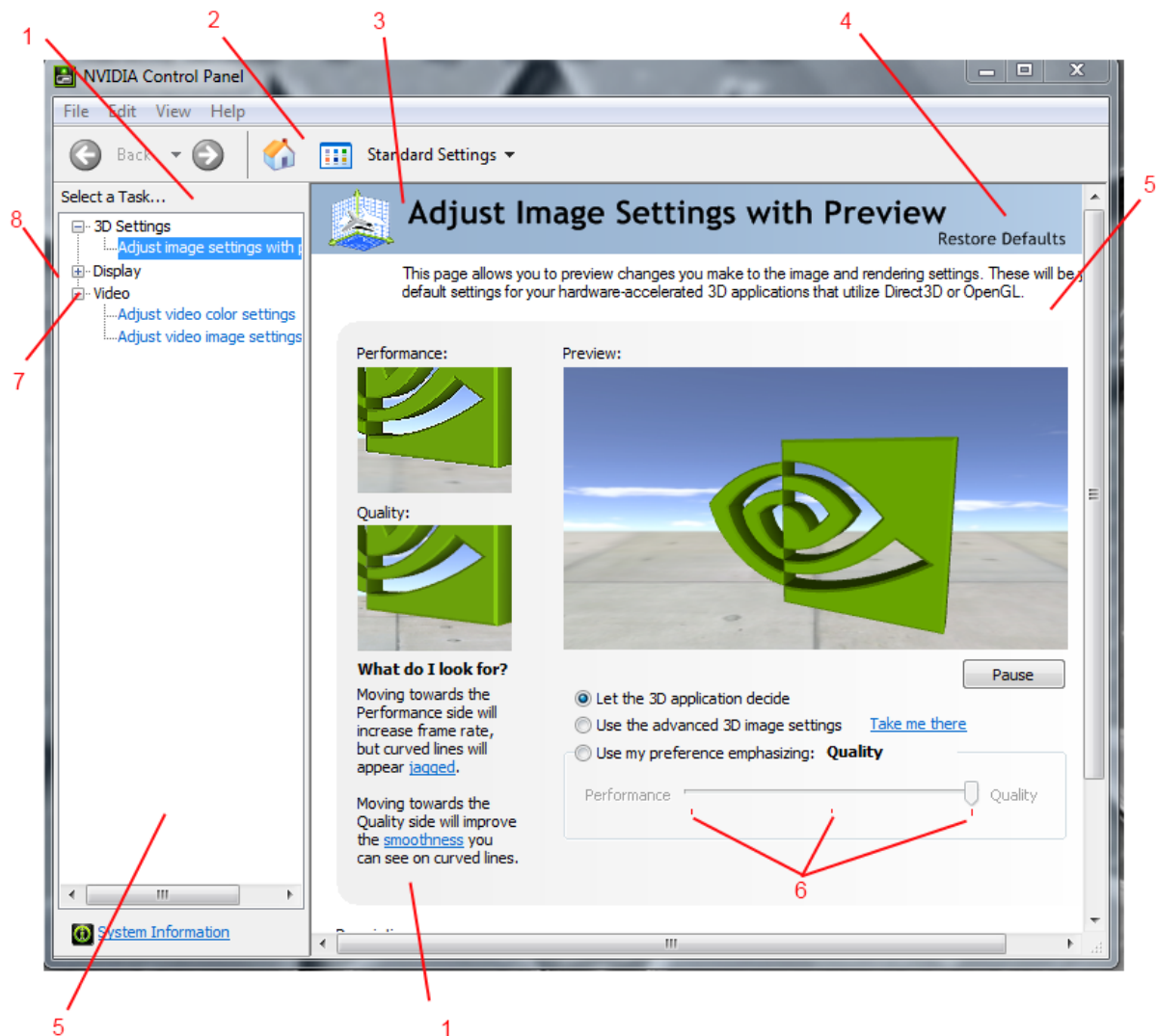
4-Fonts, Colors & System Metrics > Fonts & System Metrics > gradientactivecaption : color

5-Fonts, Colors & System Metrics > Fonts & System Metrics > window:color

6-Buttons, Boxes & Controls > Scroll Bars & Trackers > TrackBar > Tics

7-Lists, Menus & Tabs > TreeView > Glyph > 96DPI

8-Lists, Menus & Tabs > TreeView > bordercolor :color



Re: Complete Guide to Theme Building

door [Dave Senior](#) » nov 26th, 2010, 1:24 pm

Date Picker-

1-Explorer & Shell > Shell > DatePicker > DateText > Normal > Textcolor : color

2-Fonts, Colors & System Metrics > Fonts & System Metrics > Windowtext : Color

3-Explorer & Shell > Shell > PreviewPaneControl > Documents:Edit > EditText > Textcolor : color

Explorer & Shell > Shell > PreviewPaneControl > Music:Edit > EditText > Textcolor : color

Explorer & Shell > Shell > PreviewPaneControl > Photo:Edit > EditText > Textcolor : color

Explorer & Shell > Shell > PreviewPaneControl > Photo:Edit > EditText > Textcolor : color

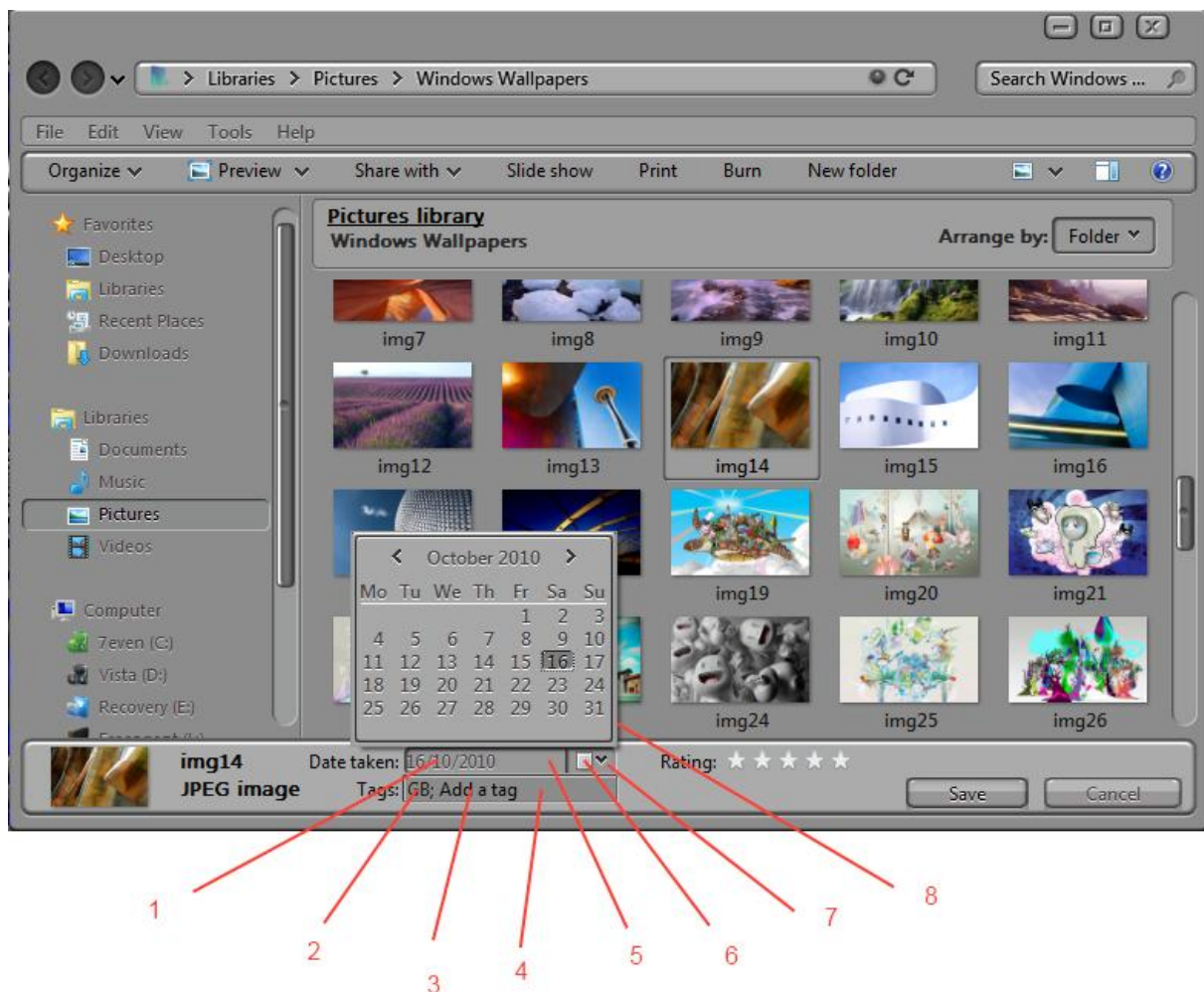
4-Explorer & Shell > Shell > PreviewPaneControl > Generic:Edit > EditBorder(NoScroll)

5-Explorer & Shell > Shell > DatePicker > DateBorder

6-Explorer & Shell > Shell > DatePicker > ShowCalendarButtonRight > glyph image 96dpi

7-Explorer & Shell > Shell > DatePicker > ShowCalendarButtonRight

8-Explorer & Shell > Shell > MonthCal > <2> (calender border)



[Re: Complete Guide to Theme Building](#)

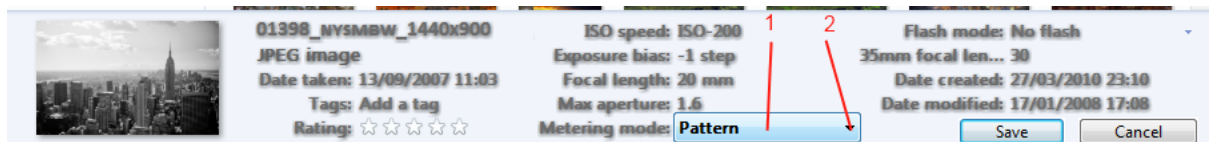
door [Dave Senior](#) » nov 26th, 2010, 1:25 pm

Droplist-

1-Lists, Menus & Tabs > DropList > DropListControl

2-Lists, Menus & Tabs > DropList > DropListControl > glyph 96

Only shows in max windows with large view details pane.



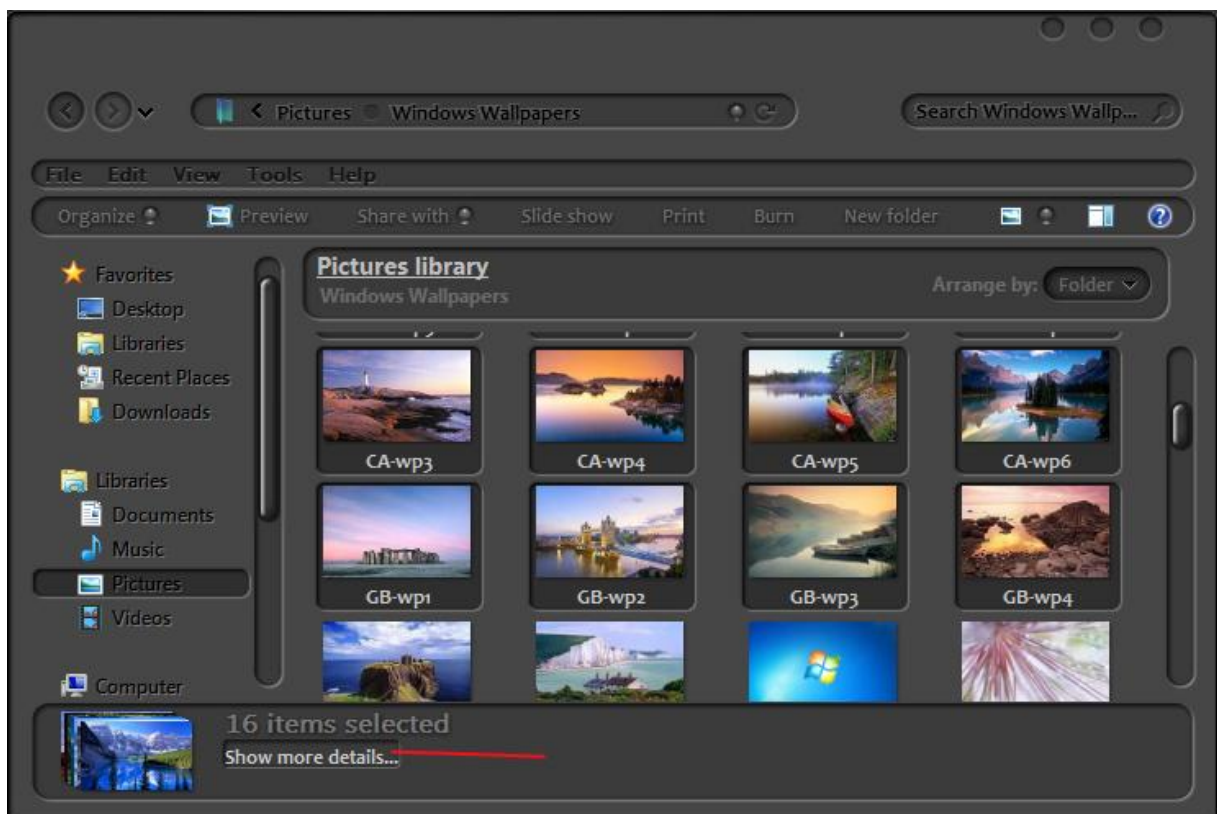
[Re: Complete Guide to Theme Building](#)

door [Dave Senior](#) » nov 26th, 2010, 1:27 pm

This is show more details text and its hover that appears in bottom left of explorer details pane when you "mass select" 16 or more items -

Explorer & Shell > Explorer > PreviewPane > <2>

Styles > FlyoutStyle > <3> > <3> > Textcolor : color



[Re: Complete Guide to Theme Building](#)

door [Dave Senior](#) » nov 26th, 2010, 1:29 pm

Search and Try Harder Vertical (In List View)-

1-Explorer & Shell > Explorer > Items View > ItemsView > SearchQueryOutline > Initial

Explorer & Shell > Explorer > Items View > ItemsView > SearchQueryOutline > Transistioned

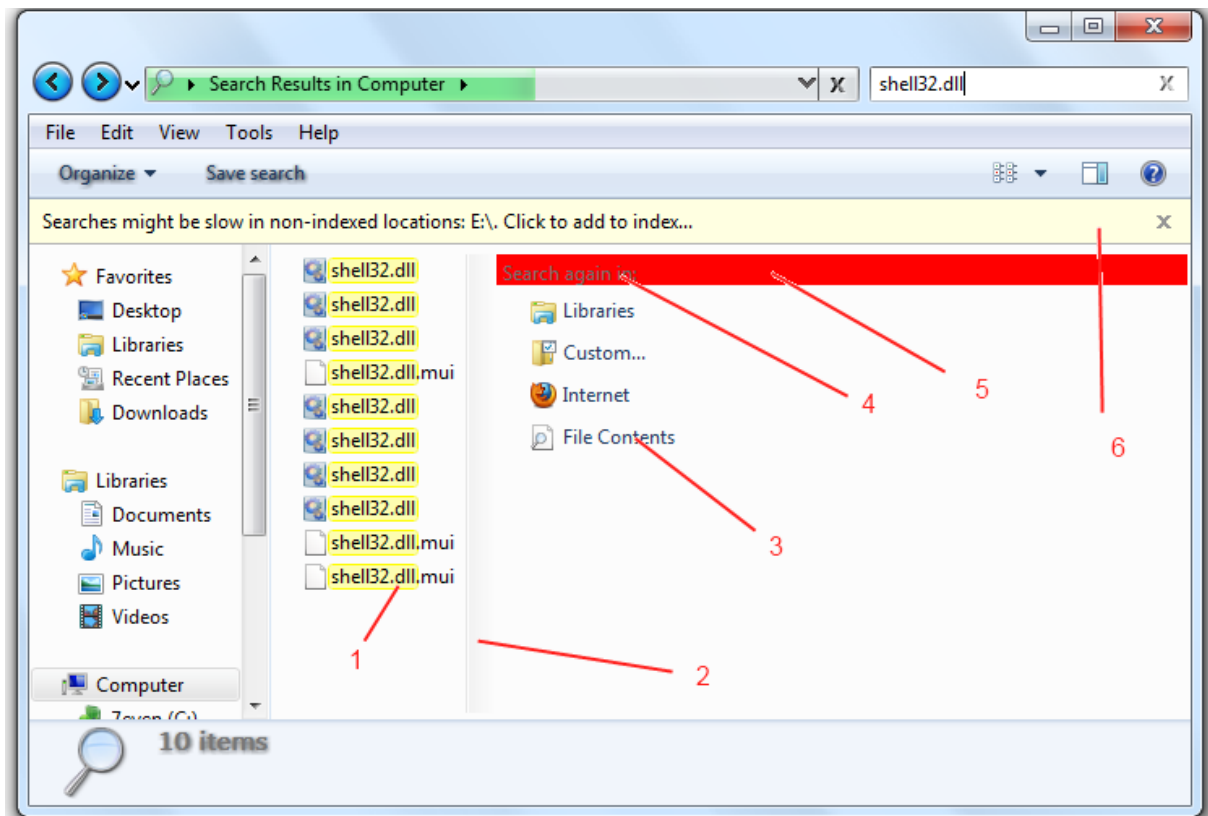
2-Address, Breadcrumb & Search > Search > TryHarder > <2>

3-Address, Breadcrumb & Search > Search > TryHarder > <1> > <2> - textcolor:color

4-Address, Breadcrumb & Search > Search > TryHarder > textcolor :color

5-Toolbars, Headers and Rebar > Rebar > Communications - textcolor:color (Thanks to 3AM for this obscure location)

6-Explorer & Shell > Explorer > InfoBar > <1>



[Re: Complete Guide to Theme Building](#)

door [Dave Senior](#) » nov 26th, 2010, 1:31 pm

Search and Try Harder (other views)-

1-Buttons, Boxes & Controls > Progress Bars > Normal > Fill

2-Buttons, Boxes & Controls > Progress Bars > Normal > TransparentBar

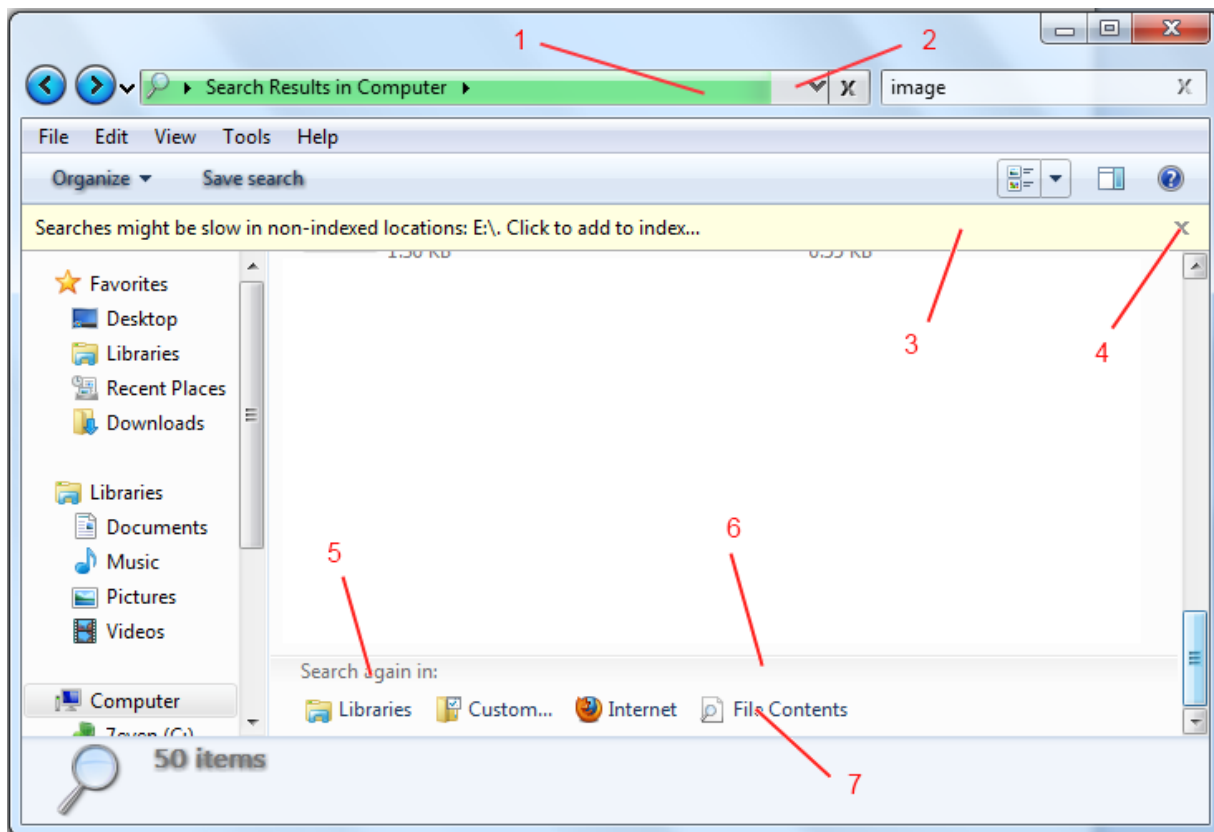
3-Explorer & Shell > Explorer > InfoBar > <1>

4-Explorer & Shell > Explorer > Tooltip > Close

5-Address, Breadcrumb & Search > Search > TryHarder > Textcolor:color

6-Address, Breadcrumb & Search > Search > TryHarder- (the image)

7-Address, Breadcrumb & Search > Search > TryHarder > <1> > <2> >textcolor:color

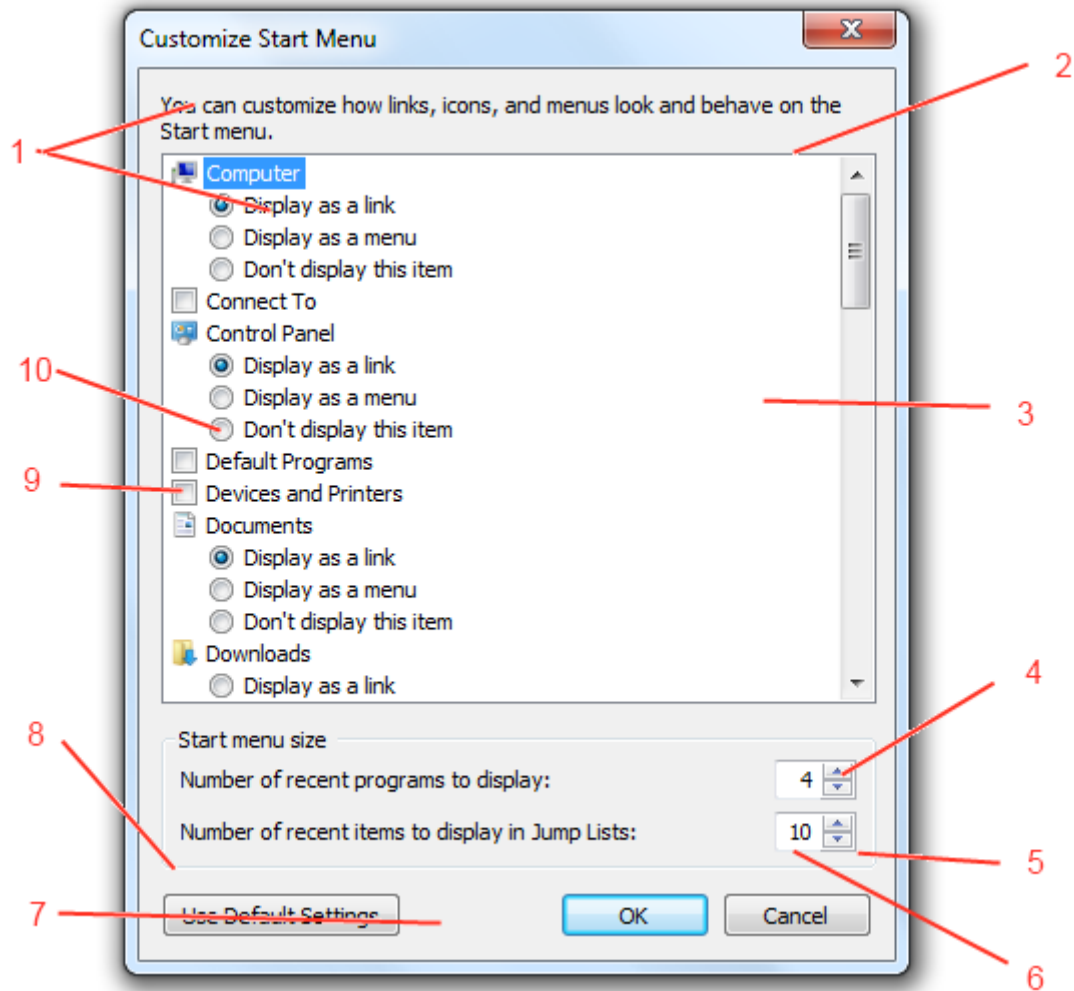


Re: Complete Guide to Theme Building

door [Dave Senior](#) » nov 26th, 2010, 1:33 pm

Customise Start Menu-

- 1-Fonts, Colors & System Metrics > Fonts & System Metrics > windowtext : color
- 2-Lists, Menus & Tabs > TreeView > bordercolor : color
- 3-Lists, Menus & Tabs > TreeView > fillcolor : color
- 4-Buttons, Boxes & Controls > Buttons > Spin > Up
Buttons, Boxes & Controls > Buttons > Spin > Down
(glyph image ,DPI96 for the arrows)
- 5-Buttons, Boxes & Controls > Boxes > Edit > Basic > bordercolor : color
- 6-Buttons, Boxes & Controls > Boxes > Edit > Basic > EditBorder(NoScroll)
- 7-Fonts, Colors & System Metrics > Fonts & System Metrics > btnface : color
- 8-Buttons, Boxes & Controls > Buttons > Button > GroupBox
- 9-Buttons, Boxes & Controls > Buttons > Button > CheckBox
- 10-Buttons, Boxes & Controls > Buttons > Button > RadioButton



[Re: Complete Guide to Theme Building](#)

door [Dave Senior](#) » nov 26th, 2010, 1:36 pm

Libraries - docs ,music etc properties window-

1-Lists, Menus & Tabs > Tab > TopTabItemLeftEdge

2-Fonts, Colors & System Metrics > Fonts & System Metrics > btnface : color

3-Lists, Menus & Tabs > Tab > PANE

4-Lists, Menus & Tabs > Tab > Body

5-Fonts, Colors & System Metrics > Fonts & System Metrics > btnshadow : color

6-Fonts, Colors & System Metrics > Fonts & System Metrics > WINDOW:COLOR

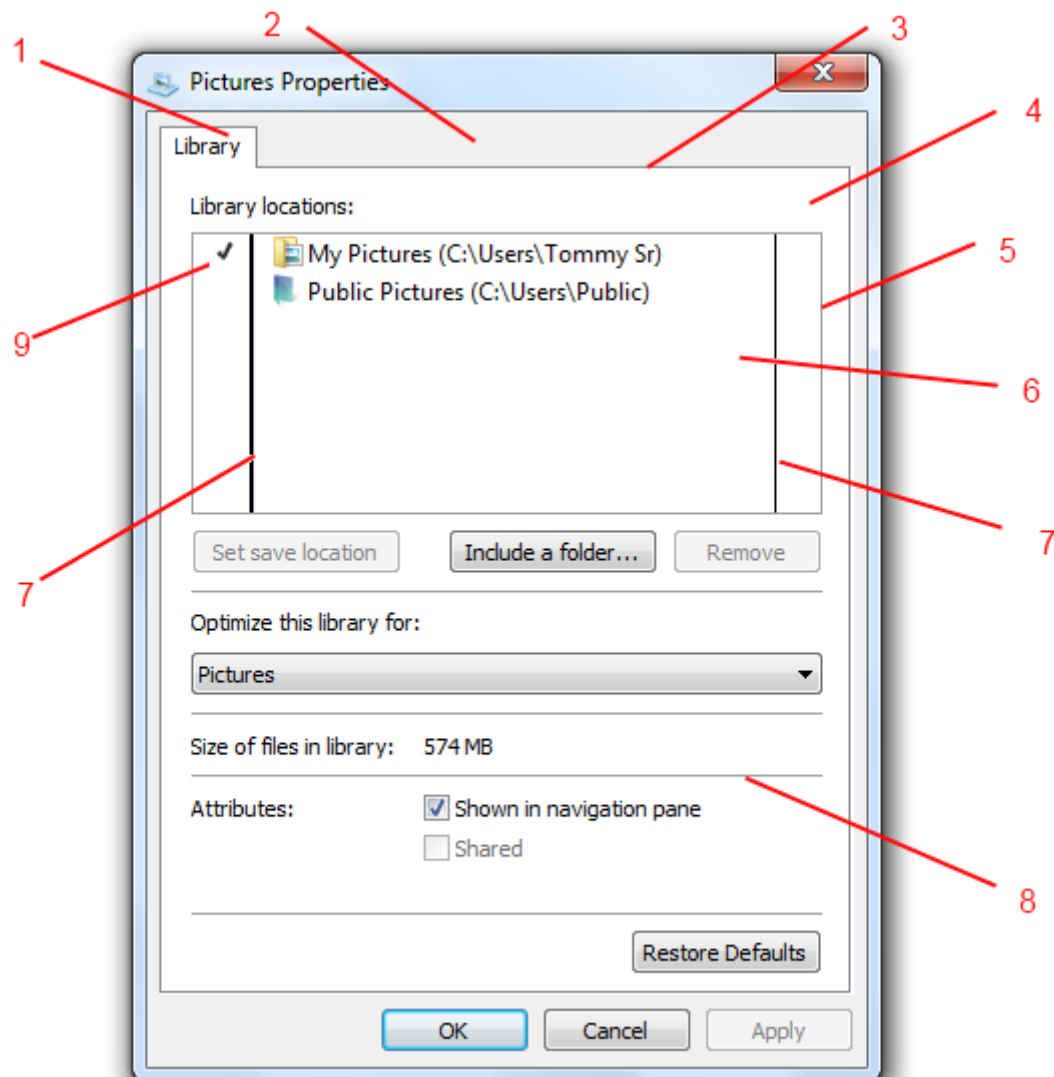
7-Lists, Menus & Tabs > ListView > ColumnDetail

8-Fonts, Colors & System Metrics > Fonts & System Metrics > BTNSHADOW:COLOR and

Fonts, Colors & System Metrics > Fonts & System Metrics > BTNHIGHLIGHT:COLOR

9-Toolbars, Headers and Rebar > Toolbars & Headers > Header > HeaderDropDownFilter >

Glyphimage, DPI96



[Re: Complete Guide to Theme Building](#)

door [Dave Senior](#) » nov 26th, 2010, 1:39 pm

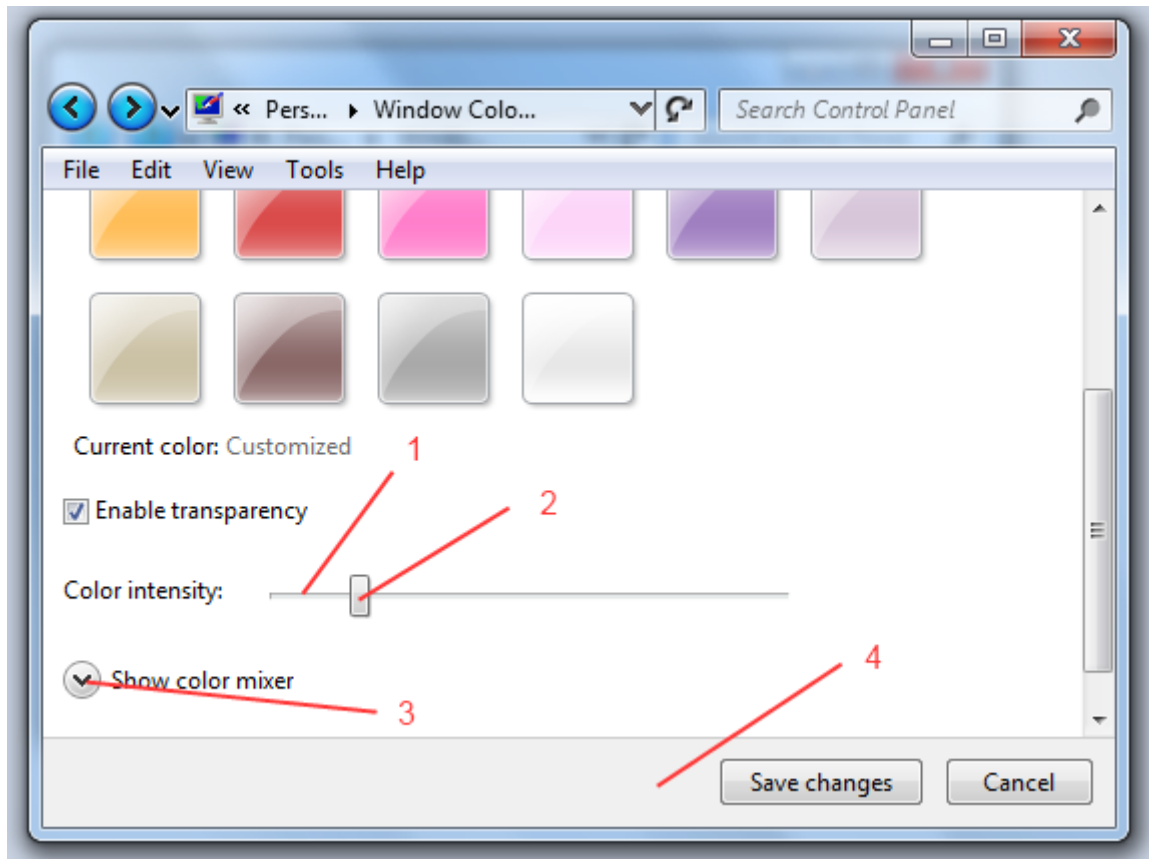
Personalise WindowColor "Window"-

1-Buttons, Boxes & Controls > Scroll Bars & Trackers > TrackBar > Track

2-Buttons, Boxes & Controls > Scroll Bars & Trackers > TrackBar > Thumb

3-Explorer & Shell > Shell > TaskDialog > ExpandoButton > Normal to expanded pressed

4-Explorer & Shell > Explorer > Control Panel > ControlPanel > LargeCommandArea



[Re: Complete Guide to Theme Building](#)

door [Dave Senior](#) » nov 26th, 2010, 1:41 pm

Communications Bar-

1-Toolbars, Headers and Rebar > Rebar > Communications > Background

2-Toolbars, Headers and Rebar > Toolbars & Headers > Alternate > <default> > Textcolor >Color

